

Data Sheet

SHP-1, His-Tag

Human, Recombinant, N-terminal His-tag
Catalog #: 100342
Lot #: 190404-1 **Conc.:** 2.53 mg/ml

Formulated in: 40 mM Tris-HCl, pH 8.0, 110 mM NaCl, 2.2 mM KCl, 0.04% Tween20, 20% glycerol, 3 mM DTT, 220mM Imidazole.

Stability: At least 6 months at -80°C. Avoid freeze/thaw cycles.

References:

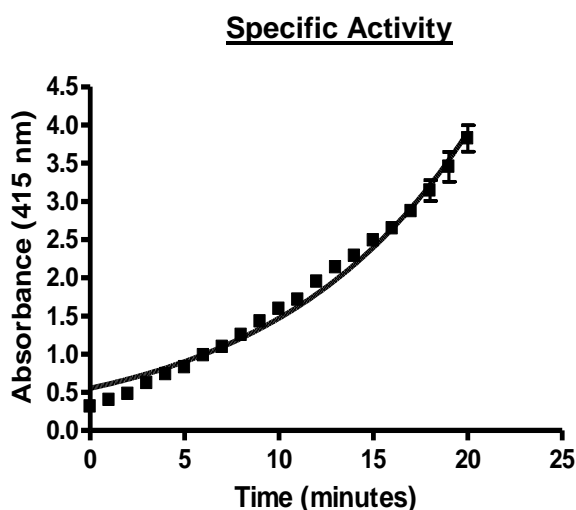
1. Stebbins, C.C., *et al.*, *Mol. Cell Biol.* 2003; **23**: 6291-6299.
2. Ganesan, L.P., *et al.*, *J. Biol. Chem.* 2003; **278**: 35710-35717.

Description: Human recombinant SHP-1, also known as tyrosine-protein phosphatase non-receptor type 6 (PTPN6), protein tyrosine phosphatase 1 C (PTP-1C), and SH-PTP1, Genbank accession number NM_002831, a.a. 221-523 with N-terminal His-tag. MW=36 kDa, expressed in an *E. coli* expression system.

Assay conditions: Enzyme reaction (50 µl) containing 20 mM HEPES, pH 7.2, 100 mM NaCl, 2 mM EDTA, 10 mM DTT, 1 mM pNPP and PTPase was monitored at 415 nm continuously with readings at 1 minute intervals for 20 minutes.

Application: Useful for the study of enzyme kinetics, screening inhibitors, and selectivity profiling.

Quality Assurance



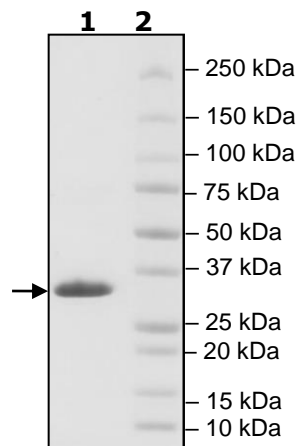
4-20% SDS-PAGE
Coomassie staining

Lane 1:
SHP1

Lane 2:
Protein Marker

MW: 36 kDa

Purity: ≥90%



OUR PRODUCTS ARE FOR RESEARCH USE ONLY. NOT FOR DIAGNOSTIC OR THERAPEUTIC USE.

To place your order, please contact us by Phone **1.858.202.1401** Fax **1.858.481.8694**
 Or you can Email us at: info@bpsbioscience.com
 Please visit our website at: www.bpsbioscience.com