

Data Sheet

SHP1, His-Tag

Human, Recombinant, N-terminal His-tag
Catalog #: 100341
Lot#: 190405-1 **Conc.:** 2.38 mg/ml

Formulated in: 40 mM Tris-HCl, pH 8.0, 110 mM NaCl, 2.2 mM KCl, 0.04% Tween20, 20% glycerol, 3 mM DTT, and 22 mM Imidazole.

Stability: At least 6 months at -80°C . Avoid freeze/thaw cycles.

References:

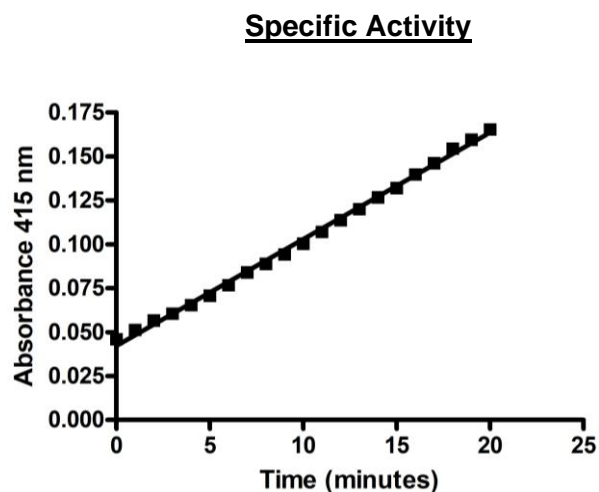
1. Oka, T. *et al.*, *Cancer Research*. **62(22)**: 6390-6394 (2002).
2. Chim, C. S. *et al.*, *Blood*. **103(12)**: 4630-4635 (2007).

Description: Human SHP1 also known as, HCP, HCPH, SHP-1, HPTP1C, PTP-1C, SHP-1L, SH-PTP1, and PTPN6 GenBank Accession No. NM_002831, a.a. 2-595 (full length) with N-terminal His-tag, expressed in an *E. coli* cell expression system. MW =68 kDa.

Specific Activity: 6.6 pmole/min/ μg .
 Assay Conditions: Enzyme reaction (50 μl) containing 20 mM HEPES, pH 7.4, 100 mM NaCl, 2 mM EDTA, 2 mM DTT, 1 mM pNPP and 0-8000 ng SHP-1. Activity monitored at 415 nm continuously with readings at 1-minute intervals for 20 minutes.

Application: Useful for the study of enzyme kinetics, screening inhibitors, and selectivity profiling.

Quality Assurance



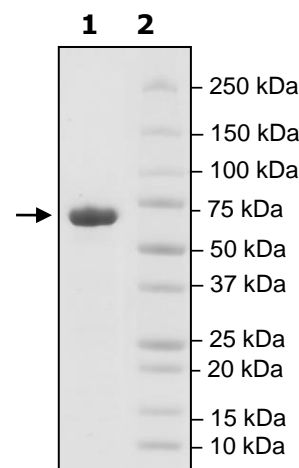
**4-20% SDS-PAGE
Coomassie staining**

Lane 1:
SHP1

Lane 2:
Protein Marker

Purity: $\geq 90\%$

MW: 68 kDa



OUR PRODUCTS ARE FOR RESEARCH USE ONLY. NOT FOR DIAGNOSTIC OR THERAPEUTIC USE.

To place your order, please contact us by Phone **1.858.202.1401** Fax **1.858.481.8694**
 Or you can Email us at: info@bpsbioscience.com
 Please visit our website at: www.bpsbioscience.com