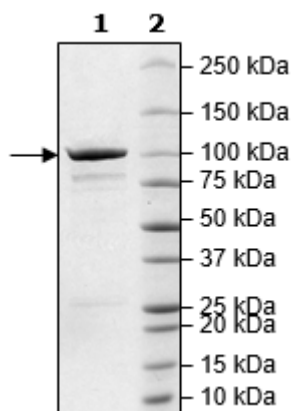


Product Information

Construct:	PDE10A2 (GST-1-789(end))
Concentration:	0.33 mg/ml
Species:	Human
Formulated In:	40 mM Tris-HCl, pH 8.0, 110 mM NaCl, 2.2 mM KCl, 0.04% Tween-20, 20% glycerol, and 3 mM DTT
Expression System:	Sf9
Format:	Aqueous buffer solution.
Stability:	At least 6 months at -80°C. Avoid freeze/thaw cycles.
Storage:	-80°C
Genbank Accession:	NM_006661
MW:	118 kDa
Purity:	≥90%
Specific Activity:	1600 pmol/min/g
Assay Conditions:	10 mM Tris-HCl, pH 7.4, 10 mM MgCl ₂ , 0.1 mg/ml BSA, 0.05% Tween-20, 200 μM cAMP, and serial dilutions of PDE10A2 at 37°C for 20 min. Quantified by 5' nucleotidase cleaving the 5'-AMP product and releasing the phosphate group which is detected by Malachite Green Reagent.
Applications:	Useful for the study of enzyme kinetics, screening inhibitors, and selectivity profiling.

Quality Control Data

4-20% SDS-PAGE Coomassie Staining



PDE10A2 Activity

