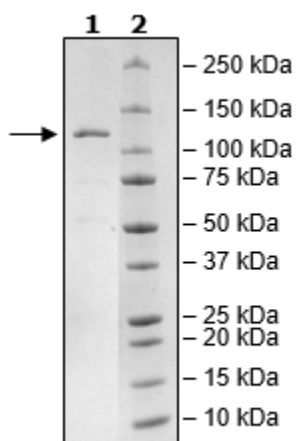


Product Information

Construct:	PDE4A1A (GST-1-647(end))
Concentration:	0.38 mg/ml
Species:	Human
Formulated In:	40 mM Tris-HCl pH 8.0, 110 mM NaCl, 2.2 mM KCl, 0.04% Tween-20, 20% glycerol, 3 mM DTT
Expression System:	Sf9
Format:	Aqueous buffer solution
Stability:	At least 6 months at -80°C. Avoid freeze/thaw cycles.
Storage:	-80°C
Genbank Accession:	U97584
MW:	102 kDa
Purity:	85%
Specific Activity:	≥9400 pmol/min/μg
Assay Conditions:	Assay was performed with 10 mM Tris-HCl, pH 7.4, 10 mM MgCl ₂ , 0.05% Tween-20, 200 μM cAMP, 2.5 kU 5'-nucleotidase, 0.1 mg/ml BSA, and PDE4A1A serial diluted from 200 ng – 0 ng. The reaction was incubated at 37°C for 20 min.
Applications:	Useful for the study of enzyme kinetics, screening inhibitors, and selectivity profiling.

Quality Control Data

4-20% SDS-Page Coomassie Staining



PDE4A1A Activity

