

## Data Sheet

### PDE1B, Rat

Rat, recombinant, N-terminal His-GST tag

**Catalog #:** 60009

**Lot #:** 121026-GN      **Conc.:** 0.32 mg/ml

**Formulated in:** 40 mM Tris-HCl, pH 8.0, 110 mM NaCl, 2.2 mM KCl, 200 mM Imidazole, 3mM DTT, 20% Glycerol.

**Stability:** >6 months at  $-80^{\circ}\text{C}$ . *Avoid freeze/thaw cycles. Storing diluted enzyme is not recommended, if necessary, use carrier protein (BSA 0.1 – 0.5%).*

**References:**

1. Bender A.T. and Beavo J.A. *Proc. Natl. Acad. Sci. U.S.A.* **103 (2)**, 460-465 (2006).
2. Bender A.T. *et al.*, *Proc. Natl. Acad. Sci. U.S.A.* **102 (2)**, 497-502 (2005).

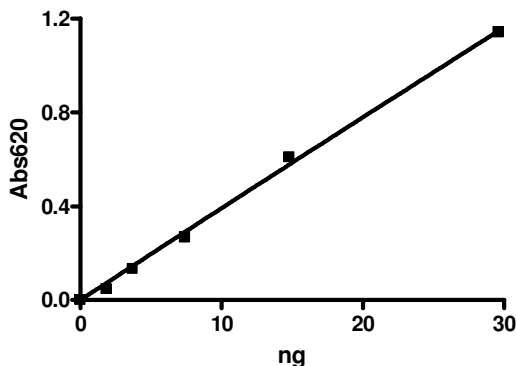
**Description:** Rat PDE1B (GenBank Accession No. NM\_022710), full length with N-terminal HIS-GST tag, MW= 89 kDa, expressed in a Baculovirus infected Sf9 cell expression system.

**Specific Activity:** 6,800 pmol/min/ $\mu\text{g}$ .  
 One unit is defined as the amount of enzyme that will convert 1 pmole of 3', 5'-cAMP to 5'-AMP per min at  $37^{\circ}\text{C}$ . Assay conditions: 10 mM Tris-HCl, pH 7.4, 10 mM  $\text{MgCl}_2$ , 0.1 mg/ml BSA, 0.05% Tween-20, 200  $\mu\text{M}$  cAMP, and serial dilutions of PDE at  $37^{\circ}\text{C}$  for 20 min. Quantified by 5'-nucleotidase cleaving the 5'-AMP product, releasing the phosphate group which is detected by Malachite Green Reagent.

**Application:** Useful for the study of enzyme kinetics, screening inhibitors, and selectivity profiling.

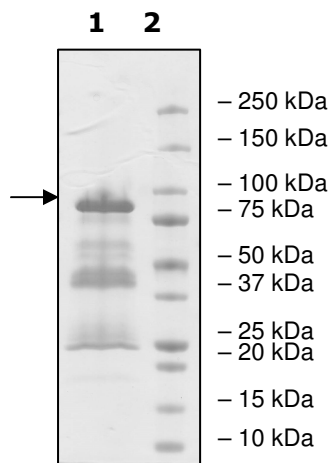
## Quality Assurance

**PDE1B Specific Activity**



**10% SDS-PAGE  
Coomassie staining**

**Lane 1:**  
2.7  $\mu\text{g}$  PDE1B  
**Lane 2:**  
Protein Marker  
**MW:** 87 kDa  
**Purity:**  $\geq 35\%$



OUR PRODUCTS ARE FOR RESEARCH USE ONLY. NOT FOR DIAGNOSTIC OR THERAPEUTIC USE.

To place your order, please contact us by Phone **1.858.829.3082** Fax **1.858.481.8694**  
 Or you can Email us at: [info@bpsbioscience.com](mailto:info@bpsbioscience.com)  
 Please visit our website at: [www.bpsbioscience.com](http://www.bpsbioscience.com)