

## Data Sheet

### PDE3A (Dog), FLAG-Tag

Dog, Recombinant, C-terminal FLAG-tag

**Catalog #:** 100264

**Lot #:** 190124-2

**Conc.:** 0.245 mg/ml

**Formulated in:** 40 mM Tris-HCl, pH 8.0, 110 mM NaCl, 2.2 mM KCl, 0.04% Tween-20, 3mM DTT and 20% glycerol.

**Stability:** At least 6 months at  $-80^{\circ}\text{C}$ . Avoid freeze/thaw cycles.

#### References:

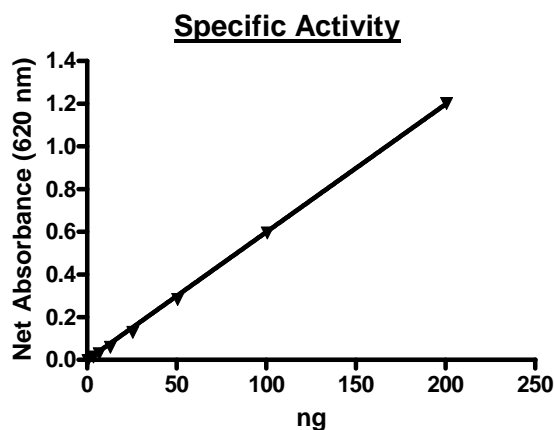
1. Hung, S.H., *et al.* *J. Biol. Chem.* **281** (39), 29236-29244 (2006)
2. Hambleton, R., *et al.* *J. Biol. Chem.* **280** (47), 39168-39174 (2005)

**Description:** Dog PDE3A, also known as Phosphodiesterase 3A, cGMP-Inhibited 3',5'-Cyclic Phosphodiesterase A, and CGI-PDE A, GenBank Accession No. XP\_005637137, a.a. 343-998 (end), with C-terminal FLAG-tag, expressed in a HEK293 expression system, MW = 75 KDa. <sup>TM</sup>

**Specific Activity:** >1300 pmol/min/ $\mu\text{g}$ .  
Assay condition: 10 mM Tris-HCl, pH 7.4, 10 mM  $\text{MgCl}_2$ , 0.1 mg/ml BSA, 0.05% Tween-20, 200  $\mu\text{M}$  cAMP, 0.02% TritonX, and serial dilutions of PDE3A at  $37^{\circ}\text{C}$  for 20 min. Quantified by 5' nucleotidase cleaving the 5'-AMP product and releasing the phosphate group which is detected by Malachite Green Reagent. Absorbance was measured at 620 nm.

**Application:** Useful for the study of enzyme kinetics, screening inhibitors, and selectivity profiling.

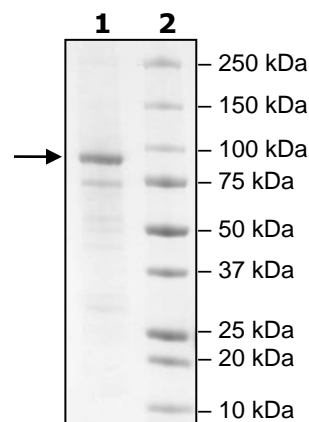
## Quality Assurance



### 4-20% SDS-PAGE Coomassie staining

**Lane 1:**  
2 $\mu\text{g}$  PDE3A(Dog)  
**Lane 2:**  
Protein Marker

**MW:** 75 kDa  
**Purity:**  $\geq 70\%$



OUR PRODUCTS ARE FOR RESEARCH USE ONLY. NOT FOR DIAGNOSTIC OR THERAPEUTIC USE.

To place your order, please contact us by Phone **1.858.202.1401** Fax **1.858.481.8694**  
Or you can Email us at: [info@bpsbioscience.com](mailto:info@bpsbioscience.com)  
Please visit our website at: [www.bpsbioscience.com](http://www.bpsbioscience.com)