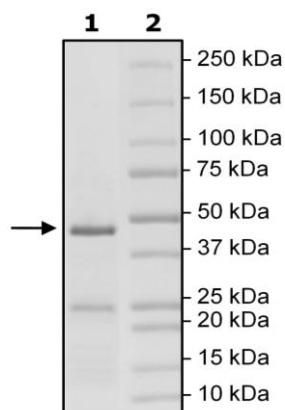


## Product Information

<b>Description:</b>	Recombinant human PARP15 (poly (ADP-ribose) polymerase family, member 15), encompassing amino acids 221-444(end). This construct contains an N-terminal GST-tag followed by a Precision cleavage site to facilitate the removal of the GST tag. This recombinant protein was affinity purified.
<b>Species</b>	Human
<b>Construct:</b>	PARP15 (GST-221-444(end))
<b>Concentration:</b>	0.14 mg/ml
<b>Expression System:</b>	<i>E. coli</i>
<b>Purity:</b>	60%
<b>Format:</b>	Aqueous buffer solution.
<b>Formulated In:</b>	40 mM Tris, pH 8.0, 110 mM NaCl, 2.2 mM KCl, 0.04% Tween-20, 3 mM DTT, and 20% glycerol
<b>MW:</b>	53 kDa
<b>Genbank Accession:</b>	NM_152615
<b>Stability:</b>	At least 6 months at -80°C.
<b>Storage:</b>	-80°C
<b>Instructions for Use:</b>	Thaw on ice and gently mix prior to use. DO NOT VORTEX. Perform a quick spin before opening. Aliquot into small volumes and flash freeze for long term storage. Avoid multiple freeze/thaw cycles.
<b>Assay Conditions:</b>	Enzyme reaction is conducted using PARP15 Chemiluminescent Assay Kit (BPS Bioscience #80567) at room temperature for 1 hour.
<b>Applications:</b>	Useful for the study of enzyme kinetics, screening inhibitors, and selectivity profiling.

## Quality Control Data

4-20% SDS-PAGE Coomassie Staining



PARP15 Activity

