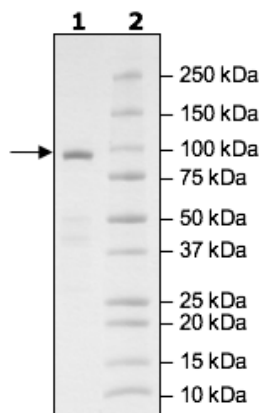


Product Information

Construct:	PARP6 (GST-1-630(end))
Concentration:	0.30 mg/ml
Species:	Human
Formulated In:	40 mM Tris-HCl, pH 8.0, 110 mM NaCl, 2.2 mM KCl, 0.04% Tween-20, 20% glycerol, and 3 mM DTT
Expression System:	Sf9
Format:	Aqueous buffer solution.
Stability:	At least 6 months at -80°C. Avoid freeze/thaw cycles.
Storage:	-80°C
Genbank Accession:	NM_020214
MW:	97 kDa
Purity:	81%
Assay Conditions:	Assay was performed according to PARP6 Chemiluminescent Assay Kit (BPS Bioscience #80556) with PARP6 at various concentrations.
Applications:	Useful for the study of enzyme kinetics, screening inhibitors, and selectivity profiling.

Quality Control Data

4-20% SDS-PAGE Coomassie Staining



PARP6 Activity

