

Data Sheet

Zebov GP1,2, His-tag

Zaire Ebola Virus, Recombinant GP1,2, C-terminal His-tag

Catalog #: 21003

Lot #: 150205-G

Conc: 0.98 mg/ml

Formulated in: 8 mM phosphate, pH 7.4, 110 mM NaCl, 2.2 mM KCl, and 20% glycerol

Stability: At least 6 months at -80°C . Avoid freeze/thaw cycles. Storing diluted protein is not recommended, if necessary, use carrier protein (BSA 0.1 – 0.5%).

References:

1. Lee, J.E., *et al.*, *Nature*. 2008; **454(7201)**: 177-182.
2. Dube, D., *et al.*, *J. Virol.* 2009; **83(7)**: 2883-2891.

Description: Zaire Ebola Virus (Zebov) glycoprotein 1,2 (GP1,2), also known as envelope glycoprotein, and GP with a C-terminal His-tag, a.a. 33-650, GenBank Accession No. NP_066246, MW=68.7 kDa, expressed in a HEK293 cell expression system. This protein runs at a higher apparent molecular weight due to glycosylation.

Application: Useful for protein binding studies, screening inhibitors of protein-protein interactions, and studying protein function.

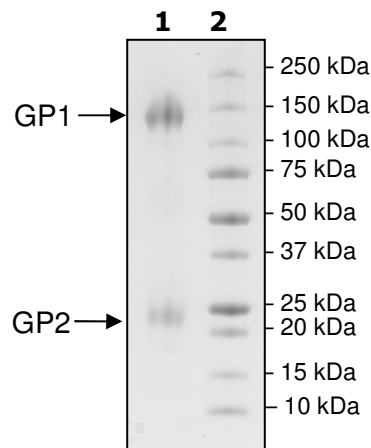
Quality Assurance

**4-20% SDS-PAGE
Coomassie staining**

Lane 1:
7 μg Zebov GP1,2

Lane 2:
Protein Marker

MW: 68.7 kDa
Purity: $\geq 90\%$



OUR PRODUCTS ARE FOR RESEARCH USE ONLY. NOT FOR DIAGNOSTIC OR THERAPEUTIC USE.

To place your order, please contact us by Phone **1.858.829.3082** Fax **1.858.481.8694**

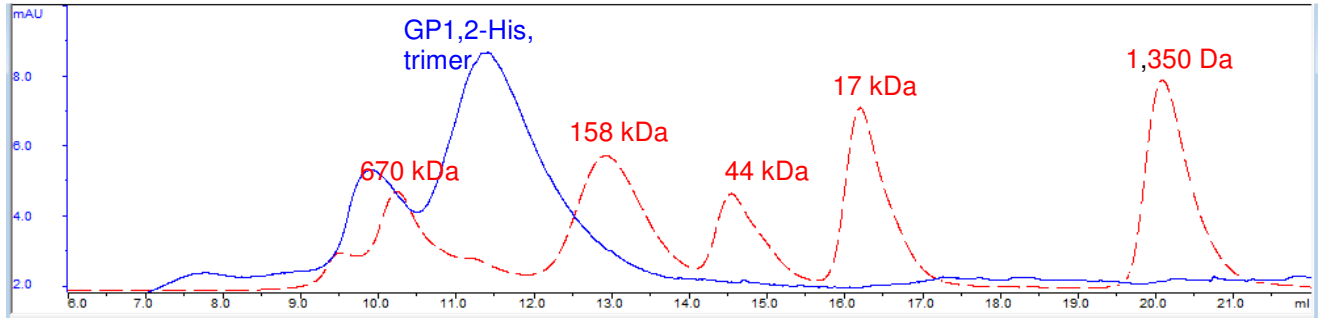
Or you can Email us at: info@bpsbioscience.com

Please visit our website at: www.bpsbioscience.com



6044 Cornerstone Court W, Ste E
San Diego, CA 92121
Tel: 1.858.829.3082
Fax: 1.858.481.8694
Email: info@bpsbioscience.com

Gel Filtration Trace



OUR PRODUCTS ARE FOR RESEARCH USE ONLY. NOT FOR DIAGNOSTIC OR THERAPEUTIC USE.

To place your order, please contact us by Phone **1.858.829.3082** Fax **1.858.481.8694**
Or you can Email us at: info@bpsbioscience.com
Please visit our website at: www.bpsbioscience.com