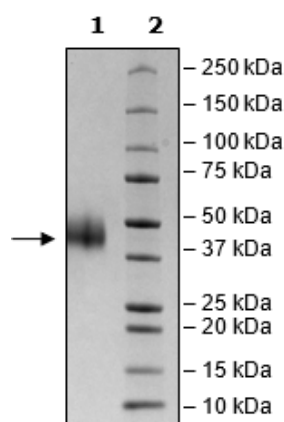


## Product Information

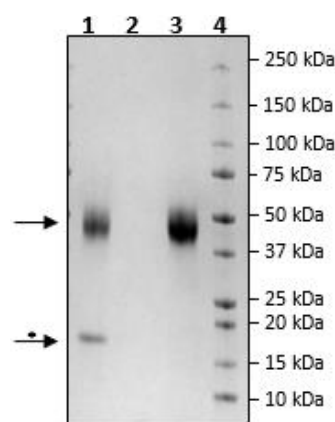
<b>Description:</b>	Delta like non-canonical Notch ligand 1 (DLK1), encompassing amino acids 24-303. This construct contains a C-terminal Avi-tag™ followed by a His-tag (6xHis). The recombinant protein was affinity purified. This protein is enzymatically biotinylated using Avi-Tag™ technology. Biotinylation confirmed to be ≥90%.
<b>Background:</b>	Delta like non-canonical Notch ligand 1 (DLK1), also known as Protein delta homolog 1, is a cleavable single-pass transmembrane protein with a restricted pattern of expression (neuroendocrine tissues and progenitor cells). It plays a role in neuroendocrine differentiation and regulates adipose tissue homeostasis. Low levels of the protein are associated with acromegaly. Overexpression of DLK1 is observed in endocrine-related cancers, such as ovarian and adrenocortical cancer, and associated with a poor prognosis. It is considered a promising therapeutic target for such malignancies.
<b>Species:</b>	Human
<b>Construct:</b>	DLK1 (24-303-Avi-His)-(Biotin)
<b>Concentration:</b>	2.27 mg/ml
<b>Expression System:</b>	HEK293
<b>Purity:</b>	≥90%
<b>Format:</b>	Aqueous buffer solution.
<b>Formulated In:</b>	8 mM phosphate, pH 7.4, 110 mM NaCl, 2.2 mM KCl, and 20% glycerol
<b>MW:</b>	33 kDa + glycans
<b>Glycosylation:</b>	This protein runs at a higher MW by SDS-PAGE due to glycosylation.
<b>Genbank Accession:</b>	NM_003836.6
<b>Stability:</b>	At least 6 months at -80°C.
<b>Storage:</b>	-80°C
<b>Instructions for Use:</b>	Thaw on ice and gently mix prior to use. DO NOT VORTEX. Perform a quick spin before opening. Aliquot into small volumes and flash freeze for long term storage. Avoid multiple freeze/thaw cycles.

## Quality Control Data

## 4-20% SDS-PAGE Coomassie Staining



## Biotin-Avidin Pulldown



1. Beads
2. Flow thru
3. Control
4. Standards

\* Avidin from beads.