

## Data Sheet

### L3MBTL2

Human, recombinant, N-terminal His-tag

**Catalog #:** 55018

Lot #: 131008-D      Conc.: 0.60 mg/ml

**Formulated in:** 40 mM Tris-HCl, pH 8.0,  
110 mM NaCl, 2.2 mM KCl, 0.04% Tween-  
20, and 20% glycerol.

**Stability:** >6 months at  $-70^{\circ}\text{C}$ . Avoid  
freeze/thaw cycles.

**References:**

1. Guo, Y., *et al.*, *Nucleic Acids Res.* 2009 Apr;**37(7)**:2204-10.
2. Trojer, P., *et al.*, *Mol Cell.* 2001 May 20;**42(4)**:438-50.

**Description:**

Human lethal(3) malignant brain tumor-like protein 2 (L3MBTL2), GenBank Accession No. NM\_031488, a.a. 178-625 with N-terminal His-tag, MW = 52.2 kDa, expressed in an *E. coli* cell expression system.

**Application:**

Useful for the study of Polycomb group (PcG) proteins, protein binding studies, screening inhibitors, and selectivity profiling.

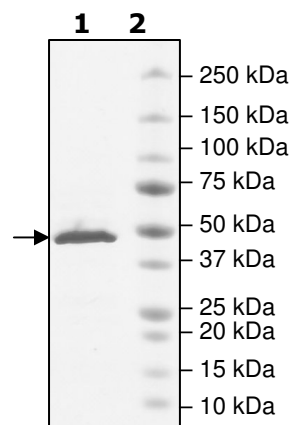
## Quality Assurance

**4-20% SDS-PAGE  
Coomassie staining**

**Lane 1:**  
2  $\mu\text{g}$  L3MBTL2

**Lane 2:**  
Protein Marker

**Purity:**  $\geq 90\%$   
**MW:** 52.2 kDa



OUR PRODUCTS ARE FOR RESEARCH USE ONLY. NOT FOR DIAGNOSTIC OR THERAPEUTIC USE.

To place your order, please contact us by Phone **1.858.829.3082** Fax **1.858.481.8694**

Or you can Email us at: [info@bpsbioscience.com](mailto:info@bpsbioscience.com)

Please visit our website at: [www.bpsbioscience.com](http://www.bpsbioscience.com)



6044 Cornerstone Court West, Suite E  
San Diego, CA 92121  
Tel: 1.858.829.3082  
Fax: 1.858.481.8694  
Email: [info@bpsbioscience.com](mailto:info@bpsbioscience.com)

**Sequence:**

**MHHHHHH**GFDWGKFLKDHSYKAAPVSCFKHVPLYDQWEDVMKGMKVEVLNSDAVL  
PSRVYWIASVIQTAGYRVLLRYEGFENDASHDFWCNLGTVDVHPIGWCAINSKILVPP  
RTIHAKFTDWKGYLMKRLVGSRTL PVDFHIKMVESMKYPFRQGMRLVVVVDKSQVSRT  
RMAVVDTVIGGRLRLLYEDGDSDDDFWCHMWSPLIHPVGWSRRVGHGIKMSERRSD  
MAHHPTFRKIYCDVAPYLFKKVRAVYTEGGWFEEGMKLEAIDPLNLGNICVATVCKVL  
LDGYLMICVDGGPSTDGLDWFCYHASSHAIFPATFCQKNDIELTPPKGYEAQTFNWE  
NYLEKTKSKAAPSRLFNMDCPNHGFKVGMKLEAVDLMEPRLICVATVKRVVHRLLSI  
HFDGWDSEYDQWVDCESPDIYPVGWCELTGYQLQPPVAAEPATPLKAKEATK KKKK  
Q

OUR PRODUCTS ARE FOR RESEARCH USE ONLY. NOT FOR DIAGNOSTIC OR THERAPEUTIC USE.

To place your order, please contact us by Phone **1.858.829.3082** Fax **1.858.481.8694**  
Or you can Email us at: [info@bpsbioscience.com](mailto:info@bpsbioscience.com)  
Please visit our website at: [www.bpsbioscience.com](http://www.bpsbioscience.com)