

## Data Sheet

### CBX7

Human, recombinant, N-terminal His-tag  
Catalog #: 55017  
Lot #: 131009-D      Conc.: 0.16 mg/ml

**Formulated in:** 40 mM Tris-HCl, pH 8.0, 110 mM NaCl, 2.2 mM KCl, 0.04% Tween-20, and 20% glycerol.

**Stability:** >6 months at  $-70^{\circ}\text{C}$ . Avoid freeze/thaw cycles.

**References:**

1. Maertens, G.N., *et al.*, *PLoS One*. 2009 Jul 28;**4(7)**:e6380.
2. Li, Q., *et al.*, *PLoS One*. 2010 Oct 29;**5(10)**:e13732.

**Description:**

Human chromobox homolog 7 (CBX7), GenBank Accession No. NM\_175709, a.a. 2-90, with N-terminal His-tag, MW=11.6 kDa, expressed in an *E. coli* cell expression system.

**Application:**

Useful for protein binding assays, screening inhibitors, and selectivity profiling.

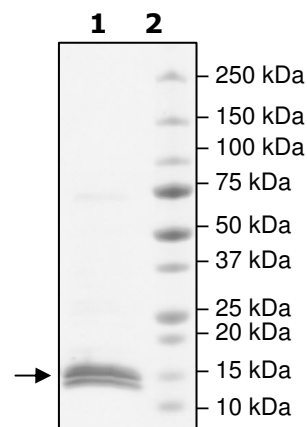
## Quality Assurance

**4-20% SDS-PAGE  
Coomassie staining**

**Lane 1:**  
2  $\mu\text{g}$  CBX7

**Lane 2:**  
Protein Marker

**Purity:**  $\geq 90\%$   
**MW:** 11.6 kDa



OUR PRODUCTS ARE FOR RESEARCH USE ONLY. NOT FOR DIAGNOSTIC OR THERAPEUTIC USE.

To place your order, please contact us by Phone **1.858.829.3082** Fax **1.858.481.8694**  
Or you can Email us at: [info@bpsbioscience.com](mailto:info@bpsbioscience.com)  
Please visit our website at: [www.bpsbioscience.com](http://www.bpsbioscience.com)



6044 Cornerstone Court W, Ste E  
San Diego, CA 92121  
**Tel:** 1.858.829.3082  
**Fax:** 1.858.481.8694  
**Email:** [info@bpsbioscience.com](mailto:info@bpsbioscience.com)

**Sequence:**

**MHHHHHHH**ELSAIGEQVFAVESIRKKRVRKGGKVEYLVKWKGWPPKYSTWEPEEHILDP  
RLVMAYEEKEERDRASGYRKRGPCKRLLLQRLYSMDLR

OUR PRODUCTS ARE FOR RESEARCH USE ONLY. NOT FOR DIAGNOSTIC OR THERAPEUTIC USE.

To place your order, please contact us by Phone **1.858.829.3082** Fax **1.858.481.8694**  
Or you can Email us at: [\*\*info@bpsbioscience.com\*\*](mailto:info@bpsbioscience.com)  
Please visit our website at: [\*\*www.bpsbioscience.com\*\*](http://www.bpsbioscience.com)