

## Data Sheet

### CDY1

Human, recombinant, N-terminal His-tag  
Catalog #: 55015  
Lot #: 130405      Conc.: 0.91 mg/ml

**Formulated in:** 40 mM Tris-HCl, pH 8.0, 110 mM NaCl, 2.2 mM KCl, 300mM Imidazole, 0.04% Tween20, 20% glycerol.

**Stability:** >6 months at -80°C

**References:**

1. Fischle, W., *et al.*, *J Biol Chem.* 2008 Jul 11;**283(28)**:19626-35.
2. Kleiman, S.E., *et al.*, *Fertil Steril.* 2011 Jun;**95(7)**:2297-302.

**Description:**

Human chromodomain protein Y-linked 1 (CDY1), also known as CDY and testis-specific chromodomain protein Y 1, (GenBank Accession No. NM\_170723) a.a. 2-90, with N-terminal His-tag, MW=11.7 kDa, expressed in an *E. coli* cell expression system.

**Application:**

Useful for protein binding assays, screening inhibitors, and selectivity profiling.

## Quality Assurance

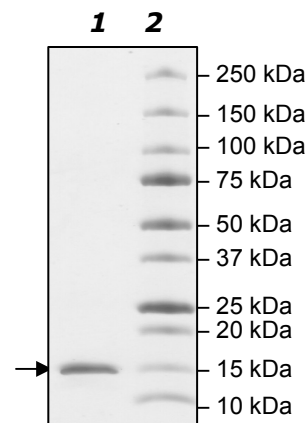
**4-20% SDS-PAGE  
Coomassie staining**

**Lane 1:**  
2 µg CDY1

**Lane 2:**  
Protein Marker

**Purity:** ≥95%

**MW:** 11.7 kDa



OUR PRODUCTS ARE FOR RESEARCH USE ONLY. NOT FOR DIAGNOSTIC OR THERAPEUTIC USE.

To place your order, please contact us by Phone **1.858.829.3082** Fax **1.858.481.8694**  
Or you can Email us at: [info@bpsbioscience.com](mailto:info@bpsbioscience.com)  
Please visit our website at: [www.bpsbioscience.com](http://www.bpsbioscience.com)



6044 Cornerstone Court W, Ste E  
San Diego, CA 92121  
**Tel:** 1.858.829.3082  
**Fax:** 1.858.481.8694  
**Email:** [info@bpsbioscience.com](mailto:info@bpsbioscience.com)

**Sequence:**

**MHHHHHH**ASQEFVEVAIVDKRQDKNGNTQYLVRWKGYDKQDDTWEPEQHLM  
NCEKCVHDFNRRQTEKQKLTWTTTSRIFSNARRRRTSRSTKANY

OUR PRODUCTS ARE FOR RESEARCH USE ONLY. NOT FOR DIAGNOSTIC OR THERAPEUTIC USE.

To place your order, please contact us by Phone **1.858.829.3082** Fax **1.858.481.8694**  
Or you can Email us at: [\*\*info@bpsbioscience.com\*\*](mailto:info@bpsbioscience.com)  
Please visit our website at: [\*\*www.bpsbioscience.com\*\*](http://www.bpsbioscience.com)