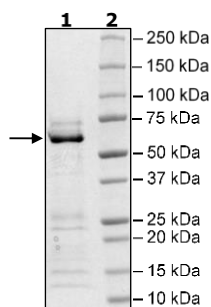


Product Information

Construct:	GLS2 (His-15-602(end))
Concentration:	0.12 mg/ml
Species:	Human
Formulated In:	40 mM Tris-HCl, pH 8.0, 110 mM NaCl, 2.2 mM KCl, 0.04% Tween-20, 20% glycerol, 220 mM imidazole
Expression System:	<i>E. coli</i>
Format:	Aqueous buffer solution
Stability:	At least 6 months at -80°C. Avoid freeze/thaw cycles.
Storage:	-80°C
Genbank Accession:	NM_013267
MW:	66 kDa
Purity:	70%
Assay Conditions:	Assay was performed according to the GLS1 Inhibitor Screening Assay Kit (BPS Bioscience #79596) with a modified incubation time of 10 minutes and GLS2 titrated from 300 ng/rxn – 0 ng/rxn.
Applications:	Useful for the study of enzyme kinetics, screening inhibitors, and selectivity profiling.

Quality Control Data

4-20% SDS-Page Coomassie Staining



GLS2 Activity

