

Data Sheet

TPH1

Human, recombinant, N-terminal His-tag

Catalog #: 71192

Lot #: 141009-1 **Conc.:** 1.54 mg/ml

Formulated in: 40 mM Tris-HCl, pH 8.0, 110 mM NaCl, 2.2 mM KCl, 0.04% Tween-20, 20% glycerol, 3 mM DTT and 170 mM imidazole.

Stability: >6 months at -80°C . *Avoid freeze/thaw cycles. Storing diluted enzyme is not recommended, if necessary, use carrier protein (BSA 0.1 – 0.5%).*

References:

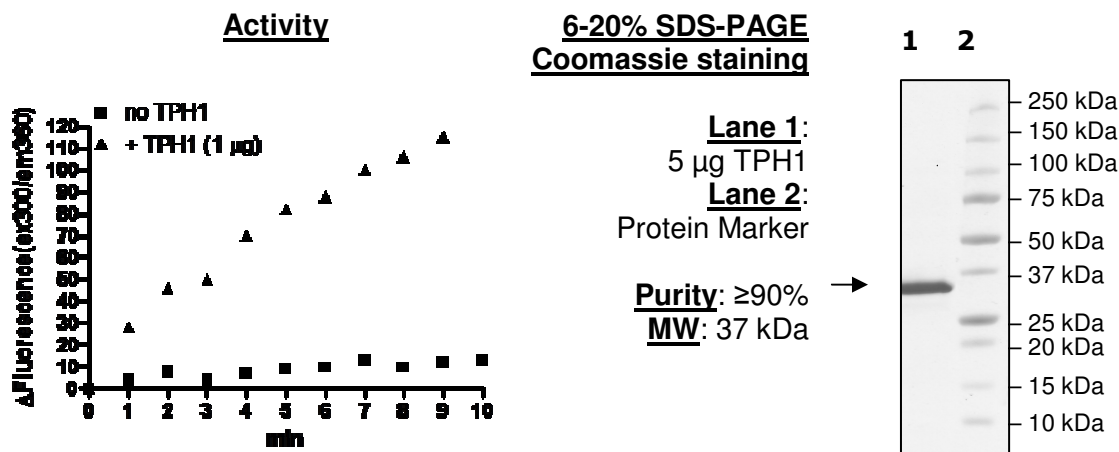
1. Cote, F., *et al.*, *Proc. Nat. Acad. Sci. USA*. 2003; **100(23)**: 13525-13530.
2. Walther, D.J., *et al.*, *Science*. 2003; **299**: 76.

Description: Human tryptophan 5-hydroxylase 1 (TPH1) also known as TRPH, GenBank Accession No. NM_004179, a.a. 105-420 with an N-terminal His-tag, MW = 37 kDa, expressed in an *E. coli* cell expression system.

Assay Conditions: Reaction was performed at room temperature in assay buffer containing 50 mM MOPS, pH 7.0, 60 μM tryptophan, 100 mM ammonium sulfate, 100 μM ferrous ammonium sulfate, 0.5 mM TCEP, 0.3 mM 6-methyl tetrahydropterin, 0.05 mg/ml catalase, 1 mM DTT and TPH1. Fluorescence signal was measured at Em360nm/Ex300nm.

Application: Useful for the study of enzyme kinetics, screening inhibitors, and selectivity profiling.

Quality Assurance



OUR PRODUCTS ARE FOR RESEARCH USE ONLY. NOT FOR DIAGNOSTIC OR THERAPEUTIC USE.

To place your order, please contact us by Phone **1.858.829.3082** Fax **1.858.481.8694**

Or you can Email us at: info@bpsbioscience.com

Please visit our website at: www.bpsbioscience.com