

Data Sheet

CA1

Human, recombinant, C-terminal His-tag

Catalog #: 71093

Lot#: 130426 **Conc.:** 0.76 mg/ml

Description: Human carbonic anhydrase I, also known as CA1, (GenBank Accession No. NM_001128829), full length (a.a. 1-261(end)) with C-terminal His-tag, MW = 29.7 kDa, expressed in an *E. coli* cell expression system.

Formulated in: 40 mM Tris-HCl, pH 8.0, 110 mM NaCl, 2.2 mM KCl, 0.04% Tween-20, 185 mM imidazole and 20% glycerol

Stability: >6 months at -70°C. Avoid freeze/thaw cycles.

References:

1. Lowe, N., *et al.*, *Gene* 1990 Sep 14;**93(2)**:277-83.
2. Jover, T., *et al.*, *J Neurosci.* 2002 Mar 15;**22(6)**:2115-24.

Quality Assurance

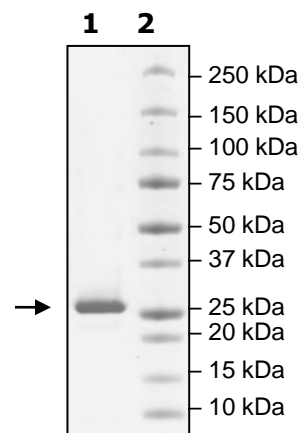
4-20% SDS-PAGE Coomassie staining

Lane 1:
2.2 µg CA1

Lane 2:
Protein Marker

MW: 29.7 kDa

Purity: ≥90%



OUR PRODUCTS ARE FOR RESEARCH USE ONLY. NOT FOR DIAGNOSTIC OR THERAPEUTIC USE.

To place your order, please contact us by Phone **1.858.202.1401** Fax **1.858.481.8694**
Or you can Email us at: support@bpsbioscience.com
Please visit our website at: www.bpsbioscience.com



6405 Mira Mesa Blvd, Suite 100
San Diego, CA 92121
Tel: 1.858.202.1401
Fax: 1.858.481.8694
Email: support@bpsbioscience.com

Sequence:

MASPDWGYDDKNGPEQWSKLYPIANGNNQSPVDIKTSETKHDTSLKPISVSYNPATAK
EIINVGHSHFVNFEDNDNRSVLKGGPFSDSYRLFQHFHWGSTNEHGSEHTVDGVKYS
AELHVAHWNSAKYSSLAEAASKADGLAVIGVLMKVGEANPKLQKVLDALQAIKTKGKR
APFTNFDPSTLLPSSLDFTYPGSLTHPPLYESVTWIICKESISVSSEQLAQFRSLLSNVE
GDNAVPMQHNNRPTQPLKGRTVRASFHHHHHH

OUR PRODUCTS ARE FOR RESEARCH USE ONLY. NOT FOR DIAGNOSTIC OR THERAPEUTIC USE.

To place your order, please contact us by Phone **1.858.202.1401** Fax **1.858.481.8694**
Or you can Email us at: support@bpsbioscience.com
Please visit our website at: www.bpsbioscience.com