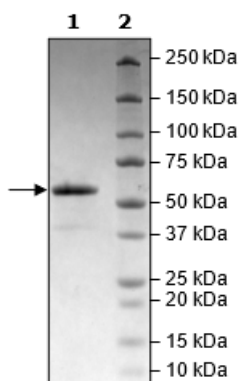


Product Information

Construct:	PKM1(PKM2/Variant 2) (His-2-531(end))
Concentration:	1.24 mg/ml
Species:	Human
Formulated In:	40 mM Tris-HCl pH 8.0, 110 mM NaCl, 2.2 mM KCl, 0.04% Tween-20, 20% glycerol, 3 mM DTT, 40 mM imidazole
Expression System:	<i>E. coli</i>
Format:	Aqueous buffer solution
Stability:	At least 6 months at -80°C. Avoid freeze/thaw cycles.
Storage:	-80°C
Genbank Accession:	NM_182470
MW:	59 kDa
Purity:	≥90%
Specific Activity:	54 pmol/min/μg
Assay Conditions:	A 50 μl reaction is conducted in a buffer containing 50 mM Tris (pH 7.4), 10 mM MgCl ₂ , 50 mM KCl, 2 mM ADP, 10 mM phosphoenolpyruvate (PEP) at room temperature for 15 min. ATP production is detected using Kinase-Glo® Luminescent Kinase Assay Platform.
Applications:	Useful for the study of enzyme kinetics, screening inhibitors, and selectivity profiling.

Quality Control Data

4-20% SDS-Page Coomassie Staining



PKM1 Activity

