

Data Sheet

GYG/GYS1 (Mouse) Complex

Mouse, Recombinant

Catalog #: 100321**Lot #:** 190429**Conc.:** 0.43 mg/ml

Formulated in: 40 mM Tris-HCL, pH 8.0, 110 mM NaCl, 2.2 mM KCl, 0.04% Tween-20, 20% Glycerol and 250 mM Imidazole.

Stability: At least 6 months at -80°C . *Avoid freeze/thaw cycles.*

Description: GYG/GYS1 complex of mouse **GYG** (GenBank Accession No. NM_013755) a.a. 1-333(end) with N-terminal His-tag and MW= 40 kDa, and mouse **GYS1** (GenBank Accession No. NM_030678), a.a. 1-738(end) with C-terminal Strep-tag and MW= 85 kDa, individually expressed in an Sf9 infected baculovirus expression system.

References:

1. Kamura, T., *et al.*, *Science*. 1999; **284(5414)**: 657-661.
2. Stebbins, C.E., *et al.*, *Science*. 1999; **284(5413)**: 455-461.

Quality Assurance

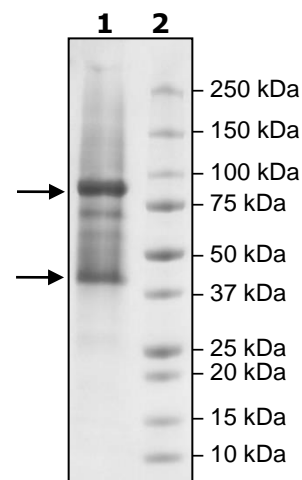
4-20% SDS-PAGE Coomassie staining

Lane 1:
4 μg mouse GYG
mouse GYS1

Lane 2:
Protein Marker

MW: mouse GYG 40 kDa
mouse GYS1 85 kDa

Purity: $\geq 68\%$



OUR PRODUCTS ARE FOR RESEARCH USE ONLY. NOT FOR DIAGNOSTIC OR THERAPEUTIC USE.

To place your order, please contact us by Phone **1.858.202.1401** Fax **1.858.481.8694**

Or you can Email us at: info@bpsbioscience.com

Please visit our website at: www.bpsbioscience.com