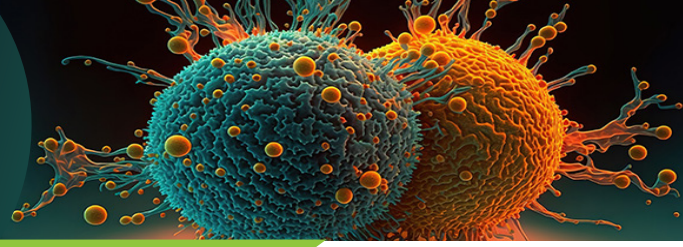


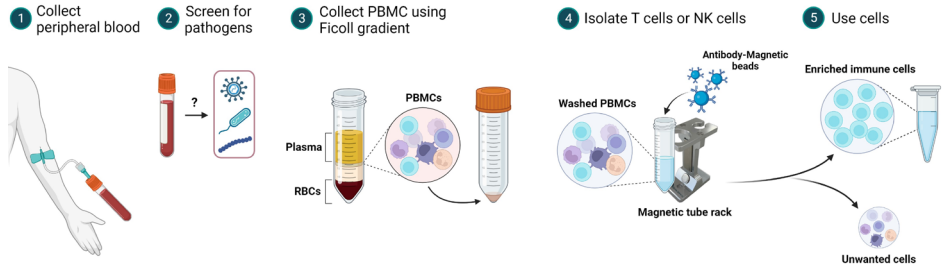
Primary Immune Cells



To support innovation across Immunology and other research areas, BPS Bioscience offers primary immune cells and related products. Get your experiments up to speed with our off-the-shelf solutions for research.

We offer cryopreserved human peripheral blood mononuclear cells (PBMCs), T cells, and expanded NK cells from healthy donors, confirmed negative for common human pathogens.

Primary Immune Cells from Peripheral Blood

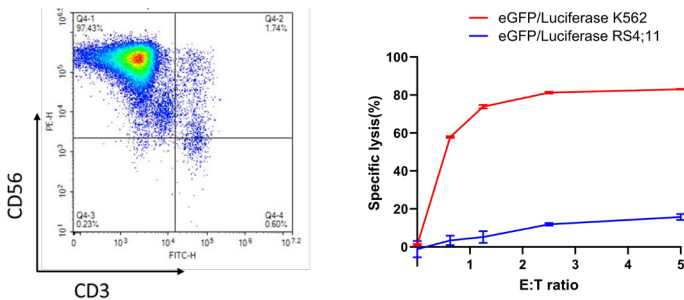


bpsbioscience.com/primary-cells

Created in BioRender.com

NK Cell Products

NK cells are critical effectors of innate immunity against cancer, pathogen-infected cells, and antibody-targeted cells. Chimeric Antigen Receptor (CAR) NK cells and multi-specific NK cell engagers are in development for cancer therapy. Accelerate your NK cell research and drug discovery using our products.

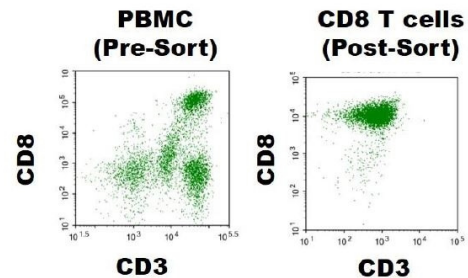


Left: enrichment and expansion of NK cell population assessed by flow cytometry. Right: NK-dependent cytotoxicity toward luciferase K562 cells (red) or RSA;11 cells (blue) expressed as % of cell lysis.

Products

NCAM1/CD56 Positive Isolation kit	78808
Expanded Human Peripheral Blood NK Cells, Frozen	78798
NK Cell Expansion Kit (with feeder cells)	78927
NK Cell Basal Medium	82164
Normal Human PBMCs, Frozen	79059
Human Interleukin-2 (IL-2)	90184

T Cell Products



Negative selection of CD8⁺ T cells from human PBMC assessed by flow cytometry.

Products

Anti-CD19 CAR-T Cells	78171
Anti-CD20 CAR-T Cells	78611
Anti-BCMA CAR-T Cells	78660
Anti-Mesothelin CAR-T Cells	78729
Untransduced T Cells	78170
CD4 ⁺ T Cells, Negatively Selected (human)	79752
CD8 ⁺ T Cells, Negatively selected (human)	79753
TCellIM™ (Optimized T Cell Medium)	78753

T cells expressing a specific CAR (Chimeric Antigen Receptor) are ideal as positive control in functional experiments, and for the design and optimization of co-culture assays.

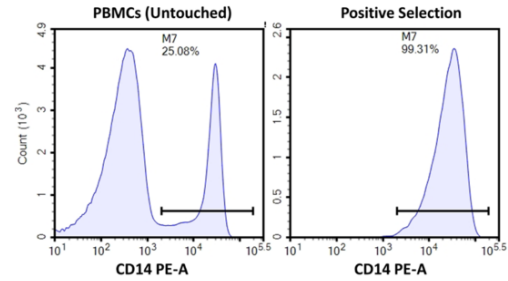
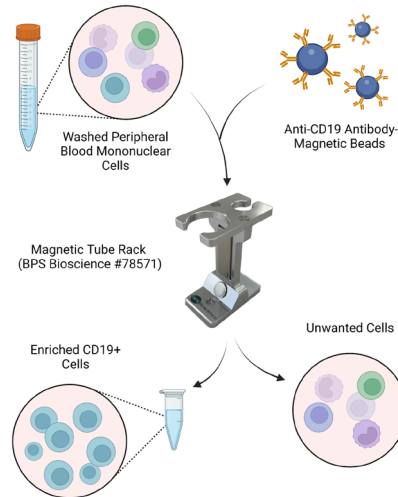
Visit our website to discover cytokines available to support the optimal growth of immune cells, such as IL-15, IL-18, or IL-21 (bpsbioscience.com/research-areas/cytokine/proteins).

Primary Immune Cells

Immune Cell Isolation Kits and Antibodies

Perform fast, simple, and efficient isolation of specific immune cell subsets. Optimized for cell isolation from PBMCs, our kits use magnetic bead/antibody complexes to separate antigen-expressing cells from heterogeneous cell populations.

Stain cells of interest with fluorescent PE or FITC-conjugated antibodies: anti-CD3 (#102008, #102009), anti-CD8 (#102011), anti-CD56 (#101673, #101865).



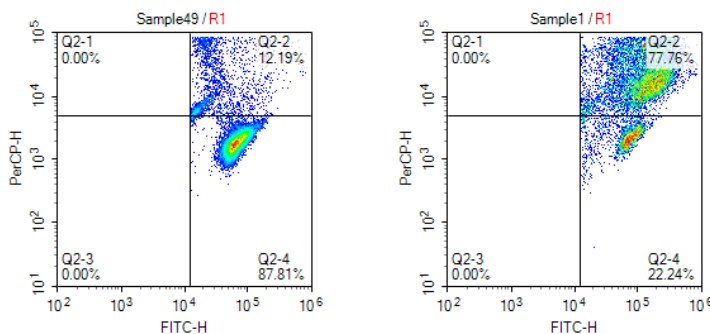
Purification of CD14⁺ immune cells using CD14 Positive Isolation Kit (#78897) was assessed by flow cytometry.

Products

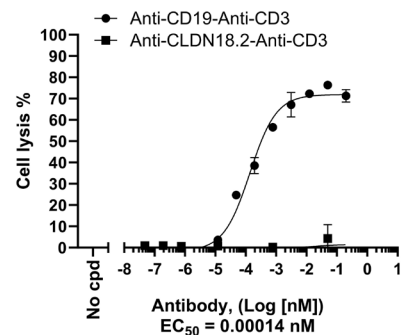
NCAM/CD56 Positive Cell Isolation Kit	78808
CD14 Positive Cell Isolation Kit	78897
CD19 Positive Cell Isolation Kit	78564
CD20 Positive Cell Isolation Kit	82132
CD235a Positive Cell Isolation Kit	78896
10x Cell Isolation Buffer	78563
Cell Isolation Magnetic Tube Rack	78571

PBMC Cytotoxicity Bioassay Kit

The PBMC Cytotoxicity Bioassay Kit (#82173) evaluates the cytotoxicity of PBMC towards target cells of interest, ideal for quantifying the potency of antibodies or T cell engager molecules. CFSE (carboxyfluorescein succinimidyl ester) is used to identify target cells while 7-AAD (7-aminoactinomycin D) labels dead cells, enabling detection at the single-cell level using flow cytometry. Alternatively, PBMC Cytotoxicity Luciferase Assay Kits (#82174 and #82214) measure the cytotoxicity of PBMC toward luciferase reporter target cells.



Cytotoxicity of effector PBMCs towards CFSE-labelled NALM6 cells incubated with an anti-CD19xCD3 bispecific immune cell engager (#100441), analyzed by flow cytometry (left panel) or expressed as % of cell lysis (right panel).



Streamline your cell culture and experimental workflow with optimized media and luciferase reagents. Our scientists have validated cell culture media such as NK Cell Basal Medium and TCellIM™, saving you time and money in optimizing your own media. Also check out our popular companion product, ONE-Step™ Luciferase Assay System, which generates robust readouts for luciferase reporter cells.



Trust our Quality: we are ISO 9001:2015-certified