

Data Sheet

EGFR (L861Q), GST-Tag

Human, Recombinant, with N-terminal
GST-tag

Catalog #: 79451

Lot #: 180202

Conc.: 0.1 mg/ml

Formulated in: 50mM Tris-HCl, pH 7.5,
150mM NaCl, 10mM glutathione, 0.1mM
EDTA, 0.25mM DTT, 0.1mM PMSF, 25%
glycerol

Stability: At least 6 months at -80°C .
Avoid freeze/thaw cycles.

References:

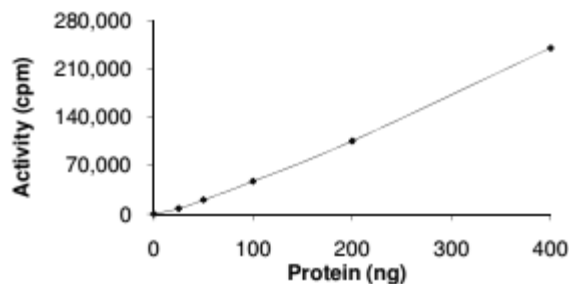
1. Wang, K., *et al.*, *J Biol. Chem*
2004;**279**:53848-53856.
2. Kobayashi, S., *et al.*, *New Eng. J*
Med. 2005;**325**:786-792.

Description: Recombinant Human
EGFR also known as ERBB, mENA,
ERBB1, and HER1 with L861Q mutation.
Genbank Accession NM_005228, a.a. 695
end, with an N-terminal GST-tag,
expressed in Sf9 cells via a baculovirus
expression system. MW = 89 kDa.

Applications: Useful for the study of
enzyme kinetics, screening inhibitors, and
selectivity profiling.

Quality Assurance

Specific Activity

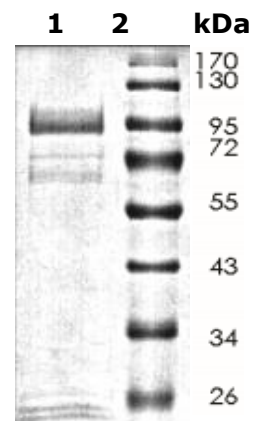


10% SDS-PAGE Coomassie staining

Lane 1:
EGFR (L861Q), GST-
Tag

Lane 2:
Protein Marker

MW: 89 kDa
Purity: $\geq 80\%$



OUR PRODUCTS ARE FOR RESEARCH USE ONLY. NOT FOR DIAGNOSTIC OR THERAPEUTIC USE.

To place your order, please contact us by Phone **1.858.829.3082** Fax **1.858.481.8694**

Or you can Email us at: info@bpsbioscience.com

Please visit our website at: www.bpsbioscience.com