

Data Sheet

EGFR, INS D770-GF-N771, GST-Tag

Human, Recombinant, with N-terminal
 GST-tag

Catalog #: 79443

Lot #: 180202

Conc.: 0.05 mg/ml

Formulated in: 50mM Tris-HCl, pH 7.5,
 150mM NaCl, 10mM glutathione, 0.1mM
 EDTA, 0.25mM DTT, 0.1mM PMSF, 25%
 glycerol.

Stability: At least 6 months at -80°C .
 Avoid freeze/thaw cycles.

References:

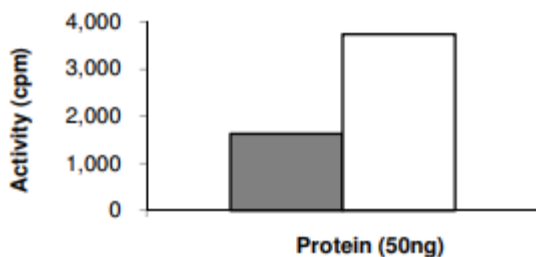
1. Wang, K., *et al.*, *J Biol. Chem* 2004;**279**:53848-53856.
2. Kobayashi, S., *et al.*, *New Eng. J Med.* 2005;**325**:786-792.

Description: Recombinant Human EGFR also known as ERBB, mENA, ERBB1, and HER1 with GF insertion between D770 and N771. Genbank Accession NM_005228, a.a. 695-end, with an N-terminal GST-tag, expressed in Sf9 cells via a baculovirus expression system. MW = 87 kDa. This kinase has a low activity that may be difficult to detect by non-isotopic methods.

Applications: Useful for the study of enzyme kinetics, screening inhibitors, and selectivity profiling.

Quality Assurance

Specific Activity

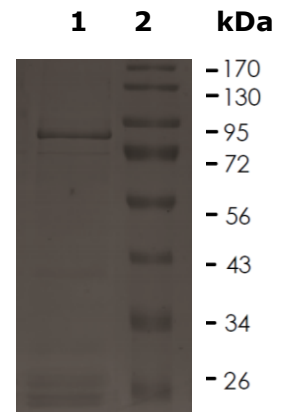


10% SDS-PAGE
Coomassie staining

Lane 1:
 EGFR, INS D770-GF-N771, GST-Tag

Lane 2:
 Protein Marker

MW: 87 kDa
Purity: $\geq 80\%$



OUR PRODUCTS ARE FOR RESEARCH USE ONLY. NOT FOR DIAGNOSTIC OR THERAPEUTIC USE.

To place your order, please contact us by Phone **1.858.202.1401** Fax **1.858.481.8694**
 Or you can Email us at: info@bpsbioscience.com
 Please visit our website at: www.bpsbioscience.com