

## Data Sheet

### **EGFR, DEL 752-759, GST-Tag**

Human, Recombinant, with N-terminal  
GST-tag

**Catalog #:** 79440

**Lot #:** 180202

**Conc.:** 0.1 mg/ml

**Formulated in:** 50mM Tris-HCl, pH 7.5,  
150mM NaCl, 10mM glutathione, 0.1mM  
EDTA, 0.25mM DTT, 0.1mM PMSF, 25%  
glycerol

**Stability:** At least 6 months at  $-80^{\circ}\text{C}$ .  
Avoid freeze/thaw cycles.

#### **References:**

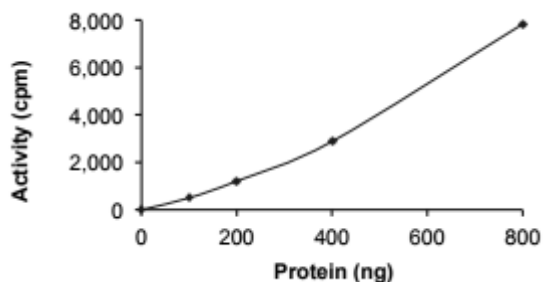
1. Wang, K., *et al.*, *J Biol. Chem*  
2004;**279**:53848-53856.
2. Kobayashi, S., *et al.*, *New Eng. J*  
*Med.* 2005;**325**:786-792.

**Description:** Recombinant Human  
EGFR also known as ERBB, mENA,  
ERBB1, and HER1 with 752-759 deletion.  
Genbank Accession NM\_005228, a.a. 695  
end, with an N-terminal GST-tag,  
expressed in Sf9 cells via a baculovirus  
expression system. MW = 87 kDa.

**Applications:** Useful for the study of  
enzyme kinetics, screening inhibitors, and  
selectivity profiling.

## **Quality Assurance**

### **Specific Activity**



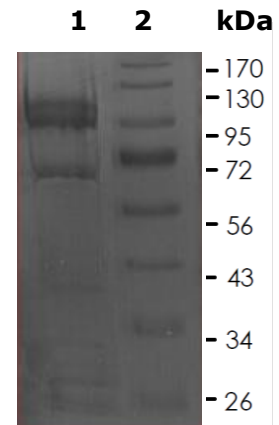
### **10% SDS-PAGE** **Coomassie staining**

**Lane 1:**  
EGFR, DEL 752-759,  
GST-Tag

**Lane 2:**  
Protein Marker

**MW:** 87 kDa

**Purity:**  $\geq 85\%$



OUR PRODUCTS ARE FOR RESEARCH USE ONLY. NOT FOR DIAGNOSTIC OR THERAPEUTIC USE.

To place your order, please contact us by Phone **1.858.829.3082** Fax **1.858.481.8694**

Or you can Email us at: [info@bpsbioscience.com](mailto:info@bpsbioscience.com)

Please visit our website at: [www.bpsbioscience.com](http://www.bpsbioscience.com)