

Data Sheet

EGFR, INS A763-FHEA-Y764, GST-Tag

Human, Recombinant, with N-terminal GST-tag.

Catalog #: 79427

Lot #: 180202 **Conc.:** 0.1 mg/ml

Formulated in: 50mM Tris-HCl, pH 7.5, 150mM NaCl, 10mM glutathione, 0.1mM EDTA, 0.25mM DTT, 0.1mM PMSF, 25% glycerol.

Stability: At least 6 months at -80°C .
Avoid freeze/thaw cycles.

References:

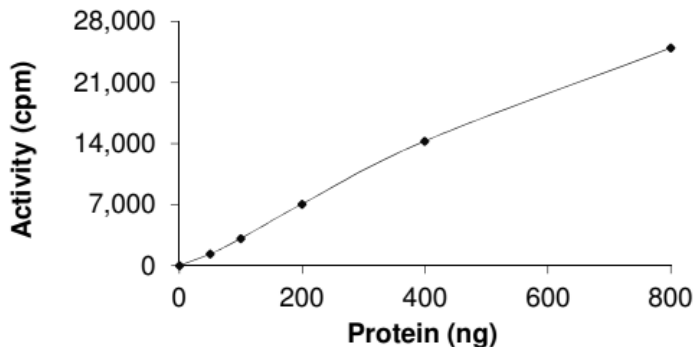
1. Wang, K., *et al.*, *J Biol. Chem* 2004;**279**:53848-53856.
2. Kobayashi, S., *et al.*, *New Eng. J Med.* 2005;**325**:786-792.

Description: Recombinant Human EGFR also known as ERBB, mENA, ERBB1, and HER1 with FHEA insertion between A763 and Y764. Genbank Accession NM_005228, a.a. 695-end, with an N-terminal GST-tag, expressed in Sf9 cells via a baculovirus expression system. MW = 98 kDa.

Applications: Useful for the study of enzyme kinetics, screening inhibitors, and selectivity profiling.

Quality Assurance

Specific Activity



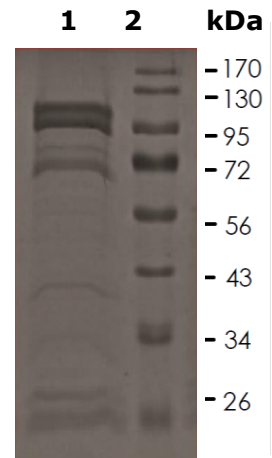
10% SDS-PAGE Coomassie staining

Lane 1:
EGFR, INS A763-FHEA-Y764, GST-Tag

Lane 2:
Protein Marker

MW: 98 kDa

Purity: $\geq 85\%$



OUR PRODUCTS ARE FOR RESEARCH USE ONLY. NOT FOR DIAGNOSTIC OR THERAPEUTIC USE.

To place your order, please contact us by Phone **1.858.829.3082** Fax **1.858.481.8694**

Or you can Email us at: info@bpsbioscience.com

Please visit our website at: www.bpsbioscience.com