

## Data Sheet

### LC20

Mouse, recombinant, N-terminal GST-tag

**Catalog #:** 50127

Lot#: 131113

Conc.: 0.2 mg/ml

**Formulated in:** 50 mM Tris-HCl, pH 7.5,  
 150 mM NaCl, 10 mM glutathione, 0.1 mM  
 EDTA, 0.1 mM PMSF, and 25% glycerol.

**Stability:** >12 months at -70°C

**References:**

1. Wagner, P D. *et al.*, *J. Biol. Chem.* 1986  
 Jun 15;**261(17)**:7778-83.
2. Trybus, K M. *et al.*, *J. Biol. Chem.* 1988  
 Nov 5;**263(31)**:16485-92.

**Description:**

Mouse LC20, also known as MYL9 and MRLC1 (GenBank Accession No. BC\_055439), full length, with N-terminal GST-tag, MW=45 kDa, expressed in an *E. coli* cell expression system.

**Application:**

Useful for protein binding studies, as a substrate for MLCK and related kinases, and as an immunogen.

## Quality Assurance

**SDS-PAGE**  
**Coomassie staining**

**Lane 1:**

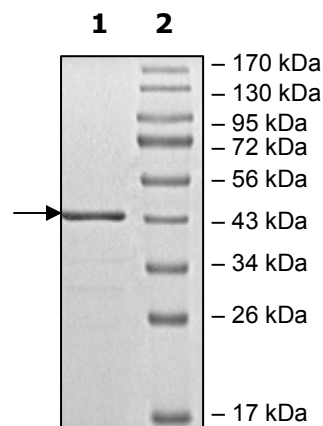
LC20

**Lane 2:**

Protein Marker

**MW:** 45 kDa

**Purity:** ≥95%



OUR PRODUCTS ARE FOR RESEARCH USE ONLY. NOT FOR DIAGNOSTIC OR THERAPEUTIC USE.

To place your order, please contact us by Phone **1.858.829.3082** Fax **1.858.481.8694**

Or you can Email us at: [info@bpsbioscience.com](mailto:info@bpsbioscience.com)

Please visit our website at: [www.bpsbioscience.com](http://www.bpsbioscience.com)