

Data Sheet

MLK2

Human, recombinant, N-terminal GST-tag

Catalog #: 41103

Lot #: xxxxxx

Conc.: 0.1 mg/ml

Formulated in: 40 mM Tris-HCl, pH 8.0, 110 mM NaCl, 2.2 mM KCl, 0.04% Tween-20, 3 mM DTT, and 20% Glycerol.

Stability: >6 months at -80°C. Avoid freeze/thaw cycles.

References:

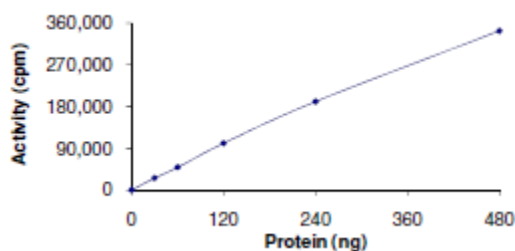
1. Dorrow, D.S., *et al.*, *Europ. J. Biochem.* 1995. **234**:492-500.
2. Katoh, M., *et al.*, *Oncogene.* 1995. **10**:1447-1451.

Description: Human MLK2, also known as Mixed Lineage Kinase 2, Mitogen-activated protein kinase kinase kinase 10, MAP3K10, and MST, GenBank Accession No. NM_002446, a.a. 1-446, with N-terminal GST-tag, MW = 76 kDa, expressed in Sf9 cells via a baculovirus expression system.

Specific Activity: 48 pmole/min/μg
Assay Conditions: Varying concentrations of MLK2 were mixed with 5 μg of MBP protein substrate and 5 μl of 250 μM [³³P]-ATP was added for a total volume of 25 μl. Mixture was incubated for 15 min at 30°C. Reaction was stopped by placing 20 μl of reaction onto phosphocellulose P81 paper. Paper was washed 3 times with 1% phosphoric acid solution for 10 min each and air dried. Radioactivity was measured from the P81 paper in the presence of scintillation fluid using a scintillation counter.

Application: Useful for the study of enzyme kinetics, screening inhibitors, and selectivity profiling.

Quality Assurance

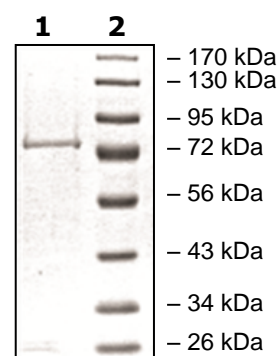


4-20% SDS-PAGE Coomassie staining

Lane 1:
MLK2

Lane 2:
Protein Marker

MW: 76 kDa
Purity: ≥85%



OUR PRODUCTS ARE FOR RESEARCH USE ONLY. NOT FOR DIAGNOSTIC OR THERAPEUTIC USE.

To place your order, please contact us by Phone **1.858.829.3082** Fax **1.858.481.8694**

Or you can Email us at: info@bpsbioscience.com

Please visit our website at: www.bpsbioscience.com