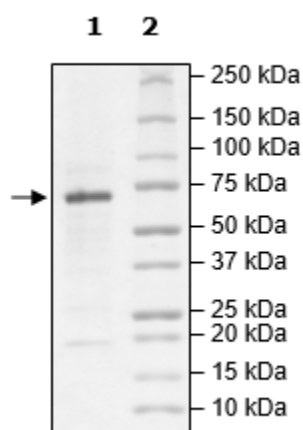


Product Information

Construct:	IRE1 (His-Avi-(469-977))
Concentration:	0.51 mg/ml
Species:	Human
Formulated In:	40 mM Tris-HCl, pH 8.0, 110 mM NaCl, 2.2 mM KCl, 0.04% Tween-20, 20% glycerol, 300 mM Imidazole
Expression System:	Sf9
Format:	Aqueous buffer solution
Stability:	At least 6 months at -80°C. Avoid freeze/thaw cycles.
Storage:	-80°C
Genbank Accession:	NM_001433.3
MW:	62 kDa
Purity:	≥90%
Specific Activity:	6 pmol/min/μg
Assay Conditions:	Assay was done in a Kinase buffer using MBP (NEB, 0.1 mg/ml) as a substrate with 20 μM ATP at 30°C for 45 min. The amount of ATP transferred was calculated using Kinase-Glo reagent (Promega).
Application:	Useful for the study of enzyme kinetics, screening inhibitors, and selectivity profiling.

Quality Control Data

4-20% SDS-Page Coomassie Staining



Specific Activity

