

## Data Sheet

### MELK

Human recombinant, with N-terminal GST-tag

**Catalog #:** 40708

Lot #: 140722

Conc.: 0.1 mg/ml

**Formulated in:** 50 mM Tris-HCl, pH 7.5, 150 mM NaCl, 10 mM glutathione, 0.1 mM EDTA, 0.1 mM PMSF, 0.25 mM DTT, 25% glycerol

**Stability:** >6 months at -80°C. Avoid freeze/thaw cycles.

#### References:

1. Nakano, I., *et al.*, *J Cell Biol* 2005;**170**:413-27.
2. Lin, ML., *et al.*, *Breast Cancer Res.* 2007;**9**:R17.

**Description:** Recombinant human MELK, Genbank Accession #NM\_014791, a.a. 1-30, with an N-terminal GST-tag, MW = 61 kDa, expressed in Sf9 cells via a baculovirus expression system.

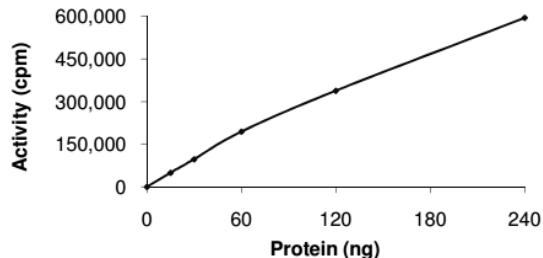
**Specific Activity:** 200 pmol/min/μg.

Assay conditions: 5 mM MOPS, 2.5 mM β-glycero-phosphate, 5 mM MgCl<sub>2</sub>, 1 mM EGTA, 0.4 mM EDTA, 0.05 mM DTT, 50 ng/ml BSA, 2 mM ATP, 5 μg of ZIPtide synthetic peptide substrate. Add [<sup>33</sup>P]-ATP and incubate at 30°C for 15 minutes, then spot reaction on phosphocellulose paper, fix in 1% phosphoric acid, and assay with a scintillation counter.

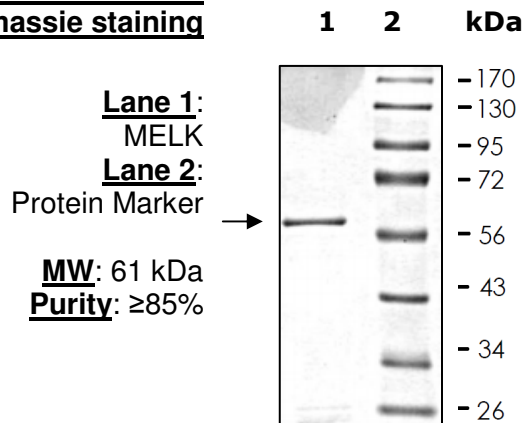
**Application:** Useful for studying enzyme kinetics, screening inhibitors, and selectivity profiling.

## Quality Assurance

### Specific Activity



### 10% SDS-PAGE Coomassie staining



OUR PRODUCTS ARE FOR RESEARCH USE ONLY. NOT FOR DIAGNOSTIC OR THERAPEUTIC USE.

To place your order, please contact us by Phone **1.858.829.3082** Fax **1.858.481.8694**

Or you can Email us at: [info@bpsbioscience.com](mailto:info@bpsbioscience.com)

Please visit our website at: [www.bpsbioscience.com](http://www.bpsbioscience.com)