



6044 Cornerstone Court West, Suite E  
San Diego, CA 92121  
Tel: 1.858.829.3082  
Fax: 1.858.481.8694  
Email: [info@bpsbioscience.com](mailto:info@bpsbioscience.com)

## Data Sheet

### IP6K2, Biotin-labeled

Human, recombinant, C-terminal His-tag,  
C-terminal Avi-tag™

**Catalog #:** 40643

**Lot#:** 130913-G2      **Conc.:** 0.19 mg/ml

**Formulated in:** 40 mM Tris-HCl pH 8.0,  
110 mM NaCl, 2.2 mM KCl, 0.04% Tween-  
20 and 20% glycerol.

**Stability:** >6 months at -70 °C. *Avoid  
freeze/thaw cycles.*

#### References:

1. Saiardi, A., *et al.*, *J Biol Chem.* 2001  
Oct 19;**276(42)**:39179-85.
2. Nagata, E., *et al.*, *J Biol Chem.* 2005  
Jan 14;**280(2)**:1634-40.

#### Description:

Human inositol hexakisphosphate kinase 2 (IP6K2), also known as IHPK2, InsP6 kinase 2, and PIUS, (GenBank Accession No. NM\_016291), a.a. 1-426 (end), with C-terminal His-tag and Avi-tag™, MW=52 kDa, expressed in an *E. coli* cell expression system and enzymatically biotin-labeled using Avi-tag™ technology.

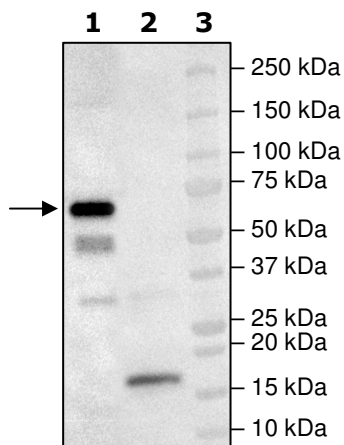
#### Application:

Useful for the study of enzyme kinetics, screening inhibitors, and selectivity profiling.

## Quality Assurance

### Streptavidin-HRP Western Blot

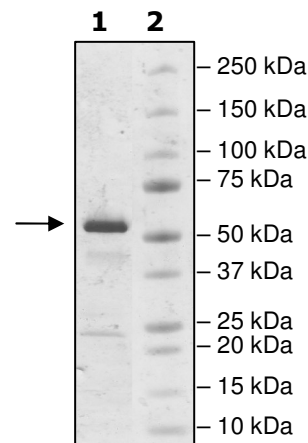
**Lane 1:**  
IP6K2 (52kDa)  
**Lane 2:**  
+ control (17kDa)  
**Lane 3:**  
Protein Marker



### 4-20% SDS-PAGE Coomassie staining

**Lane 1:**  
3 µg IP6K2  
**Lane 2:**  
Protein Marker

**MW:** 52 kDa  
**Purity:** ≥89%



OUR PRODUCTS ARE FOR RESEARCH USE ONLY. NOT FOR DIAGNOSTIC OR THERAPEUTIC USE.

To place your order, please contact us by Phone **1.858.829.3082** Fax **1.858.481.8694**

Or you can Email us at: [info@bpsbioscience.com](mailto:info@bpsbioscience.com)

Please visit our website at: [www.bpsbioscience.com](http://www.bpsbioscience.com)



6044 Cornerstone Court West, Suite E  
San Diego, CA 92121  
**Tel:** 1.858.829.3082  
**Fax:** 1.858.481.8694  
**Email:** [info@bpsbioscience.com](mailto:info@bpsbioscience.com)

**Sequence:**

MSPAFRAMDVEPRAKGVLLPEFVHQVGGHSCVLRFNETTLCCKPLVPREHQFYETLP  
MRKFTPQYKGVVSVRFEEDERNLCLIAIYPLKGDHGIVDIVDNSDCEPKSKLLRWTTNK  
KHHVLETEKTPKDWVRQHRKEEKMKSHKLEEFELKKSEVLYYTVEKKGNISSQLKH  
YNPWSMKCHQQQLQRMKENAKHRNQYKFILLENLTSRYEVPCLDLKMGTRQHGDDA  
SEEKAANQIRKCQQSTSAVIGVRVCGMQVYQAGSGQLMFMNKYHGRKLSVQGFKEAL  
FQFFHNGRYLRRELLGPVLKKLTELKAVLERQESYRFYSSLLVIYDGKERPEVVLDS  
AEDLEDLSEESADESAGAYAYKPIGASSVDVRMIDFAHTTCRLYGEDTVVHEGQDAGYI  
FGLQSLDIVTEISEESGEHHHHHGGGLNDIFEAQKIEWHE

OUR PRODUCTS ARE FOR RESEARCH USE ONLY. NOT FOR DIAGNOSTIC OR THERAPEUTIC USE.  
To place your order, please contact us by Phone **1.858.829.3082** Fax **1.858.481.8694**  
Or you can Email us at: [info@bpsbioscience.com](mailto:info@bpsbioscience.com)  
Please visit our website at: [www.bpsbioscience.com](http://www.bpsbioscience.com)