

Data Sheet

IP6K2

Human, recombinant, C-terminal FLAG-His tags

Catalog #: 40642

Lot#: 130114-D **Conc.:** 0.19 mg/ml

Formulated in: 45 mM Tris-HCl, pH 8.0,
124 mM NaCl, 2.4 mM KCl, and 10%
glycerol.

Stability: >6 months at -80 °C

References:

1. Saiardi, A., *et al.*, *J Biol Chem.* 2001
Oct 19;**276(42)**:39179-85.
2. Nagata, E., *et al.*, *J Biol Chem.* 2005
Jan 14;**280(2)**:1634-40.

Description:

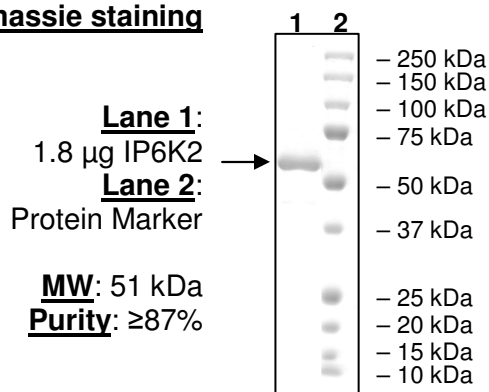
Human inositol hexakisphosphate kinase 2 (IP6K2), also known as IHPK2, InsP6 kinase 2, and PIUS, (GenBank Accession No. NM_016291), a.a. 1-426 (end), with C-terminal FLAG and His tags, MW=51 kDa, expressed in baculovirus infected Sf9 cells.

Application:

Useful for the study of enzyme kinetics, screening inhibitors, and selectivity profiling.

Quality Assurance

10% SDS-PAGE Coomassie staining



OUR PRODUCTS ARE FOR RESEARCH USE ONLY. NOT FOR DIAGNOSTIC OR THERAPEUTIC USE.

To place your order, please contact us by Phone **1.858.829.3082** Fax **1.858.481.8694**

Or you can Email us at: info@bpsbioscience.com

Please visit our website at: www.bpsbioscience.com



6044 Cornerstone Court West, Suite E
San Diego, CA 92121
Tel: 1.858.829.3082
Fax: 1.858.481.8694
Email: info@bpsbioscience.com

Sequence:

MSPAFRAMDVEPRAKGVLLPEPFVHQVGGHSCVLRFNETTLCPLVPREHQFYETLPAEM
RKFTPQYKGVVSVRFEEDERNLCLIAAYPLKGDHGIVDIVDNSDCEPKSKLLRWTTNKKH
HVLETEKTPKDWVRQHRKEEKMKSHKLEEEFEWLKSEVLYYTVEKKNISSQLKHYNP
WSMKCHQQQLQRMKENAKHRNQYFILLNLTSTRYEVPCVLDLKMGTQRQHGDASEEK
AANQIRKCCQSTSAVIGVRVCGMQVYQAGSGQLMFMNKYHGRKLSVQGFKEALFQFFH
NGRYLRRELLGPVLKTELKAVLERQESYRFYSSLLVIYDGKERPEVVLDSAEEDLEL
SEESADESAGAYAYKPIGASSVDVRMIDFAHTTCRLYGEDTVVHEGQDAGYIFGLQSLIDI
VTEISEESGEDYKDDDDKHHHHH

OUR PRODUCTS ARE FOR RESEARCH USE ONLY. NOT FOR DIAGNOSTIC OR THERAPEUTIC USE.
To place your order, please contact us by Phone **1.858.829.3082** Fax **1.858.481.8694**
Or you can Email us at: info@bpsbioscience.com
Please visit our website at: www.bpsbioscience.com