

Data Sheet

Cofilin1

Human, recombinant, N-terminal GST tag

Catalog #: 40525

Lot#: 90108 Conc.: 4.65 mg/ml

Formulated in: 40 mM Tris-HCl, pH 8.0,
110 mM NaCl₂, 2mM KCl, 20% glycerol,
and 3 mM DTT.**Stability:** >6 months at -80°C**References:**

1. Nagumo Y et al., Biochem Biophys Res Commun. 2008 Dec 19; **377(3)**: 921-5.
2. San Martín A, et al., Circ Res. 2008 Feb **29**; **102(4)**:432-8

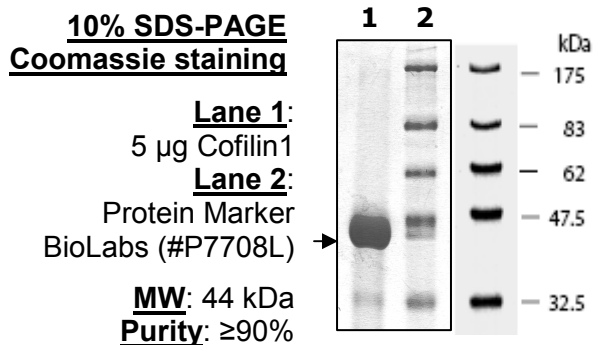
Description:

Human recombinant Cofilin1 (2-end) with N-terminal GST tag (GenBank Accession No. NM_005507), expressed in a E.coli expression system. Cofilin 1 MW=44 kDa,

Application:

Kinase substrate for the kinase assay; western blot

Quality Assurance



OUR PRODUCTS ARE FOR RESEARCH USE ONLY. NOT FOR DIAGNOSTIC OR THERAPEUTIC USE.

To place your order, please contact us by Phone **1.858.202.1401** or **1.858.829.3082**, Fax
1.858.481.8694Or you can Email us at: info@bpsbioscience.com
Please visit our website at: www.bpsbioscience.com