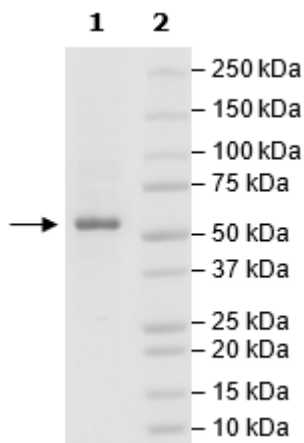


Product Information

Construct:	SRC (His-2-536(end))
Concentration:	0.65 mg/ml
Species:	Human
Formulated In:	40 mM Tris-HCl, pH 8.0, 110 mM NaCl, 2.2 mM KCl, 0.04% Tween-20, 210 mM imidazole and 20% glycerol
Expression System:	Sf9
Format:	Aqueous buffer solution
Stability:	At least 6 months at -80°C. Avoid freeze/thaw cycles.
Storage:	-80°C
Genbank Accession:	NM_005417
MW:	61 kDa
Purity:	≥90%
Specific Activity:	350 pmol/min/μg
Assay Conditions:	Assay was done according to SRC Assay Kit (BPS Bioscience #79680) with various amounts of SRC.
Applications:	Useful for the study of enzyme kinetics, screening inhibitors, and selectivity profiling.

Quality Control Data

4-20% SDS-Page Coomassie Staining



SRC Activity

