

## Data Sheet

### SRC, Active

Human, recombinant, N-terminal GST tag

Catalog #: 40483

Lot#: 80205

Conc.: 0.65 mg/ml

**Formulated in:** 25 mM Tris-HCl, pH 8.0, 69 mM NaCl, 1.35 mM KCl, 0.025% Tween-20, 125 mM Imidazole, 50% glycerol, and 3 mM DTT.

**Stability:** >6 months at -80°C

#### References:

1. Finlay, D. and Vuori, K.. *Cancer Res.* **67** (24), 11704-11711 (2007).
2. Vielreicher, M. *et al. J. Biol. Chem.* **282** (46), 33623-33631 (2007).

#### Description:

Human SRC (GenBank Accession No. NM\_005417), full length with N-terminal GST tag, MW = 86 kDa, expressed in a Baculovirus infected Sf9 cell expression system.

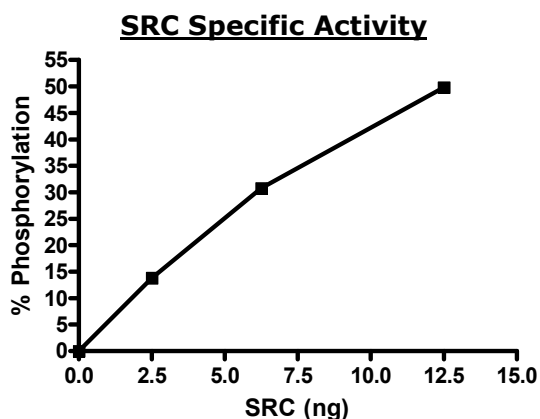
#### Specific Activity: 55 pmol/min/μg

Assay condition: 50 mM HEPES (pH7.5), 10 mM MgCl<sub>2</sub>, 1 mM EGTA, 0.01% Brij-35, 200 μM ATP, 2 μM Tyr2 substrate (Z-lyte kinase assay kit from Invitrogen), 1 hour at room temperature.

#### Application:

Useful for the study of enzyme kinetics, screening inhibitors, and selectivity profiling.

## Quality Assurance

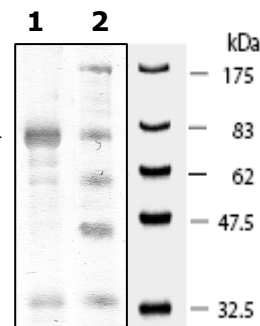


#### 10% SDS-PAGE Coomassie staining

**Lane 1:**  
6 μg SRC →

**Lane 2:**  
Protein Marker  
BioLabs (#P7708L)

**MW:** 86 kDa.  
**Purity:** ≥60%



OUR PRODUCTS ARE FOR RESEARCH USE ONLY. NOT FOR DIAGNOSTIC OR THERAPEUTIC USE.

To place your order, please contact us by Phone **1.858.829.3082** Fax **1.858.481.8694**

Or you can Email us at: [info@bpsbioscience.com](mailto:info@bpsbioscience.com)

Please visit our website at: [www.bpsbioscience.com](http://www.bpsbioscience.com)