

## Data Sheet

### c-Myc

Human, recombinant, N-terminal His-tag

**Catalog #:** 40453

**Lot #:** 140617A

**Conc:** 4.8 mg/ml

**Formulated in:** 50 mM Tris-HCl, pH 8.0, 100 mM NaCl, 3 mM DTT, and 20% glycerol.

**Stability:** >6 months at  $-80^{\circ}\text{C}$ . Avoid freeze/thaw cycles. Storing diluted protein is not recommended, if necessary, use carrier protein (BSA 0.1 – 0.5%).

#### References:

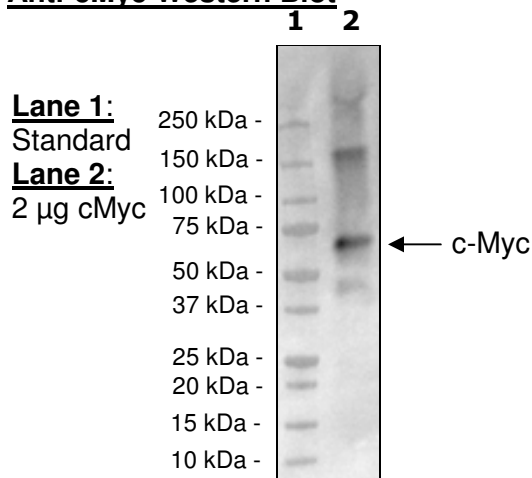
1. Perez, E.A., et al. *J. Clin. Oncol.* 2011; **29(6)**: 651-649.
2. Itkonen, H.M., et al. *Canc. Res.* 2013 ; **73**: 5277-5287.

**Description:** Human c-Myc, also known as MYC proto-oncogene, transcription factor p64, GenBank Accession No. NM\_002467, a.a. 2 - 454(end), N-terminal His-tag MW = 52 kDa, expressed in an E. coli expression system.

**Application:** Useful as a kinase substrate.

### Quality Assurance

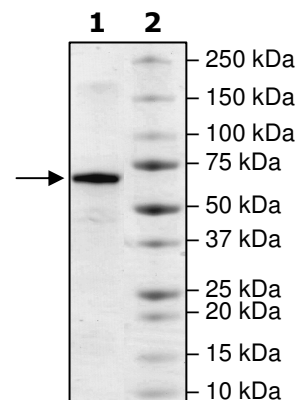
#### Anti-cMyc Western Blot



#### 4-20% SDS-PAGE Coomassie staining

**Lane 1:**  
2  $\mu\text{g}$  cMyc  
**Lane 2:**  
Protein Marker

**MW:** 52 kDa  
**Purity:**  $\geq 90\%$



OUR PRODUCTS ARE FOR RESEARCH USE ONLY. NOT FOR DIAGNOSTIC OR THERAPEUTIC USE.

To place your order, please contact us by Phone **1.858.829.3082** Fax **1.858.481.8694**

Or you can Email us at: [info@bpsbioscience.com](mailto:info@bpsbioscience.com)

Please visit our website at: [www.bpsbioscience.com](http://www.bpsbioscience.com)



6044 Cornerstone Court W, Ste E  
San Diego, CA 92121  
**Tel:** 1.858.829.3082  
**Fax:** 1.858.481.8694  
**Email:** [info@bpsbioscience.com](mailto:info@bpsbioscience.com)

### *Sequence*

MHHHHHHHLEVLFGQPDFFRVVENQQPPATMPLNVSFTNRNYDLDYDSVQPYFYCDEE  
ENFYQQQQQSELPAPPSEDIWKKFELLPTPPLSPSRRSGLCSPSYVAVTPFSLRGD  
NDGGGGSFSTADQLEMVTELLGGDMVNQSFICDPDDETFIKNIIIQDCMWSGFSA  
AAKLVSEKLAZYQAARKDSGSPNPARGHSVCSTSSLYLQDLSAAASECIDPSVVPYPLN  
DSSSPKSCASQDSSAFSPSSDLSLSTESSPQGSPEPLVLHEETPPTTSSDSEEEQED  
EEEIDVVSVEKRQAPGKRSESGSPSAGGHKPPHSPLVLKRCHVSTHQHNYAAPST  
RKDYPAAKRVKLDSDVRVLRQISNNRKCTSPRSSDTEENVKRRRTHNVLERQRRNELKR  
SFFALRDQIPELENNEKAPKVILKKATAYILSVQAEEQKLISEEDLLRKRREQLKHKL  
EQLRNSCA

**Red:** His-tag  
**Blue:** Precission site  
**Black:** cMYC (a.a. 2-454(end))

OUR PRODUCTS ARE FOR RESEARCH USE ONLY. NOT FOR DIAGNOSTIC OR THERAPEUTIC USE.

To place your order, please contact us by Phone **1.858.829.3082** Fax **1.858.481.8694**  
Or you can Email us at: [info@bpsbioscience.com](mailto:info@bpsbioscience.com)  
Please visit our website at: [www.bpsbioscience.com](http://www.bpsbioscience.com)