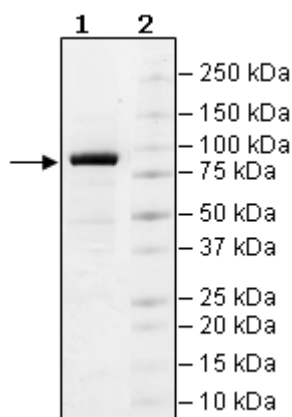


## Product Information

<b>Description:</b>	Recombinant human FES (feline sarcoma oncogene), full-length encompassing amino acids 2-822(end). This construct contains an N-terminal His-tag (6xHis) followed by a FLAG-tag. This construct was affinity purified.
<b>Background:</b>	FES (feline sarcoma oncogene), also known as proto-oncogene FPS, is a cytoplasmic tyrosine-protein kinase that regulates the actin cytoskeleton, microtubule assembly, and cell attachment. FES is involved in hematopoiesis and cytokine receptor signaling. FES phosphorylates BCR (breakpoint cluster region) to downregulate BCR kinase activity. This protein has been observed to have both oncogenic and tumor suppressor activity, studied in melanoma, colorectal cancer, and osteosarcoma.
<b>Species:</b>	Human
<b>Construct:</b>	FES (His-FLAG-2-822(end))
<b>Concentration:</b>	3.79 mg/ml
<b>Expression System:</b>	Sf9
<b>Purity:</b>	≥90%
<b>Format:</b>	Aqueous buffer solution.
<b>Formulated In:</b>	40 mM Tris pH 8.0, 110 mM NaCl, 2.2 mM KCl, 250 mM Imidazole, 3 mM DTT and 20% glycerol.
<b>MW:</b>	95 kDa
<b>Specific Activity:</b>	62 pmol/min/μg
<b>Genbank Accession:</b>	NM_002005
<b>Stability:</b>	At least 6 months at -80°C.
<b>Storage:</b>	-80°C
<b>Instructions for Use:</b>	Thaw on ice and gently mix prior to use. DO NOT VORTEX. Perform a quick spin before opening. Aliquot into small volumes and flash freeze for long term storage. Avoid multiple freeze/thaw cycles.
<b>Assay Conditions:</b>	Assay was done according to BTK Assay Kit (BPS Bioscience #79568) with various amounts of FES, His-FLAG-Tag Recombinant.
<b>Applications:</b>	Useful for the study of enzyme kinetics, screening inhibitors, and selectivity profiling.

## Quality Control Data

4-20% SDS-PAGE Coomassie Staining



FES Activity

