

Data Sheet

FES

Human, recombinant, N-terminal His- and Flag-tags

Catalog #: 40425

Lot#: 110630-HEFE **Conc.:** 0.57 mg/ml

Formulated in: 40 mM Tris-HCl, pH 7.5, 110 mM NaCl, 3 mM DTT, 2.2 mM KCl, 20% glycerol, 80 µg/ml FLAG peptide.

Stability: >6 months at -80°C

References:

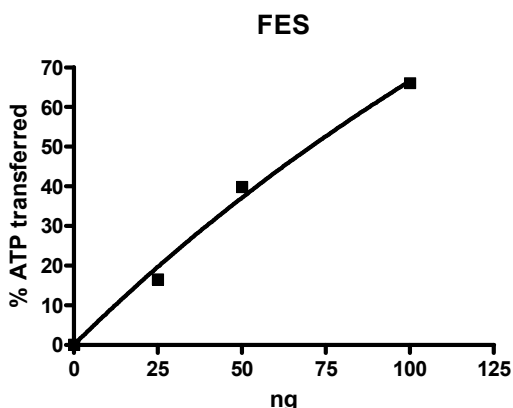
1. Hellwig S, Smithgall TE. *Front Biosci.* 2011 Jun 1;**17**:3146-55.
2. Kanda S, Miyata Y. *Front Biosci.* 2011 Jan 1;**16**:1024-35.

Description: Human feline sarcoma oncogene (FES), GenBank Accession #NM_002005, a.a. 2-822 (end), N-terminal His-tag and N-terminal Flag-tag, MW=95.3 kDa, expressed in Sf9 insect cells via a baculovirus expression system.

Specific Activity: 235 pmol/min/µg
 Assay was done in a Kinase buffer (40 mM Tris pH 7.4, 10 mM MgCl₂, 0.1 mg/ml BSA) containing 1 mM DTT using Poly-(Glu4:Tyr)-substrate (0.2 mg/ml) and 20 µM ATP for 30 min at 30°C. The amount of ATP transferred was calculated using Kinase-Glo Plus™ reagent (Promega).

Application: Useful for the study of enzyme kinetics, screening inhibitors, and selectivity profiling.

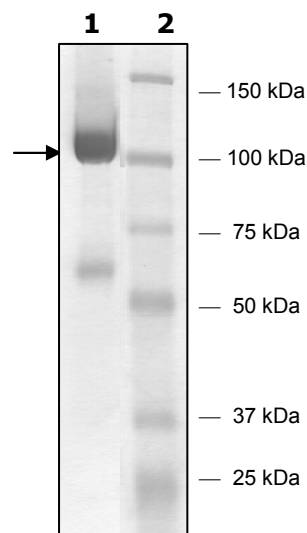
Quality Assurance



10% SDS-PAGE Coomassie staining

Lane 1:
FES
Lane 2:
Protein Marker

MW: 95 kDa
Purity: ≥90%



OUR PRODUCTS ARE FOR RESEARCH USE ONLY. NOT FOR DIAGNOSTIC OR THERAPEUTIC USE.

To place your order, please contact us by Phone **1.858.829.3082** Fax **1.858.481.8694**
 Or you can Email us at: info@bpsbioscience.com
 Please visit our website at: www.bpsbioscience.com