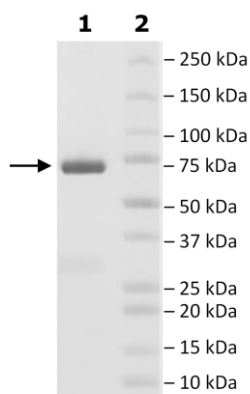


Product Information

Construct:	Wee1 (GST-Th-215-646(end))
Concentration:	0.59 mg/ml
Species:	Human
Formulated In:	40 mM Tris-HCl pH 8.0, 110 mM NaCl, 2.2 mM KCl, 0.04% Tween-20, 20% glycerol, 3 mM DTT
Expression System:	Sf9
Format:	Aqueous buffer solution
Stability:	At least 6 months at -80°C. Avoid freeze/thaw cycles.
Storage:	-80°C
Genbank Accession:	NM_003390
MW:	75 kDa
Purity:	≥90%
Specific Activity:	≥42 pmol/min/μg
Assay Conditions:	Wee1 activity was confirmed using the Wee1 Assay Kit (BPS Bioscience #79909) with Wee1 titrated from 480 ng/rxn- 7.5 ng/rxn and 20 μM ATP used instead of 10 μM ATP as instructed in the kit.
Applications:	Useful for the study of enzyme kinetics, screening inhibitors, and selectivity profiling.

Quality Control Data

4-20% SDS-Page Coomassie Staining



Specific Activity

