

## Data Sheet

### Casein Kinase 1 $\alpha$ 1

Human, Recombinant

Catalog #: 40310

Lot #: 160707

Conc.: 0.25 mg/ml

**Formulated in:** 40 mM Tris-HCl pH 8.0, 110 mM NaCl, 2.2 mM KCl, 0.04% Tween 20, 3 mM DTT and 20% glycerol.

**Stability:** At least 6 months at  $-80^{\circ}\text{C}$ . Avoid freeze/thaw cycles. Storing diluted enzyme is not recommended, if necessary, use carrier protein (BSA 0.1 – 0.5%).

#### References:

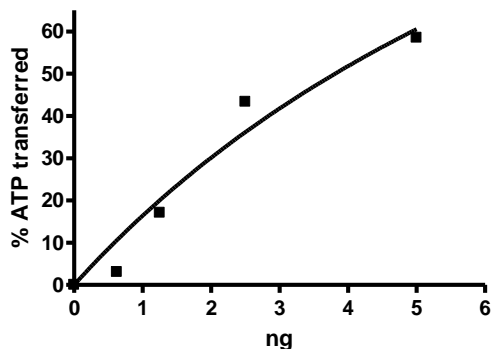
1. Kloss, B. *et al.*, *Cell* **94(1)**:97-107(1998)
2. Songyang, Z. *et al.*, *Molecular and Cell Biology* **16(11)**: 6486-6493 (1996)

**Description:** Human Casein Kinase 1 $\alpha$ 1, also known as CSNK1A1, GenBank Accession NM\_001892, (no tag). a.a 2-337 (end). Expressed in an insect Sf9 cell expression system. MW=39 kDa.

**Assay Description:** Assay was done in Kinase buffer containing 0.2 mM DTT using CK1 peptide substrate (0.1 mg/ml) and 20  $\mu\text{M}$  ATP. Reaction was done at  $30^{\circ}\text{C}$  for 50 min. Amount of ATP transferred was calculated using Kinase-Glo reagent (Promega)

**Application:** Useful for the study of enzyme kinetics, screening inhibitors, and selectivity profiling.

#### Specific Activity

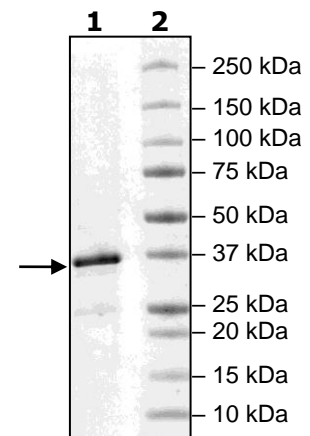


#### 4-20% SDS-PAGE Coomassie staining

**Lane 1:**  
2  $\mu\text{g}$  Caesin Kinase

**Lane 2:**  
Protein Marker

**MW:** 39 kDa  
**Purity:**  $\geq 82\%$



OUR PRODUCTS ARE FOR RESEARCH ONLY. NOT FOR DIAGNOSTIC OR THERAPEUTIC USE.

To place your order, please contact us by Phone **1.858.202.1401** Fax **1.858.481.8694**

Or you can Email us at: [support@bpsbioscience.com](mailto:support@bpsbioscience.com)

Please visit our website at: [www.bpsbioscience.com](http://www.bpsbioscience.com)