

Data Sheet

PIP5K1A

Human, recombinant, N-terminal GST-tag

Catalog #: 40305

Lot #: 190814

Conc.: 0.1 mg/ml

Formulated in: 50 mM Tris-HCl, pH 7.5, 150 mM NaCl, 10 mM glutathione, 0.1 mM EDTA, 0.25 mM DTT, 0.1 mM PMSF, 25% glycerol.

Stability: At least 6 months at -80°C . Avoid freeze/thaw cycles.

References:

1. Pan, W., *et al.*, *Science*. 2008; **321**: 1350-1353.
2. Barrero-Villar, M., *et al.*, *J. Immunol.* 2008; **15;181(10)**: 6882-6888.

Description: Human phosphatidylinositol 4-phosphate 5-kinase type-1 alpha (PIP5K1A) also known as PIP5K1 α , GenBank Accession No. BC_007833, a.a. full-length with a N-terminal GST-tag, expressed in a baculovirus-infected Sf9 insect cell expression system. MW = 86 kDa.

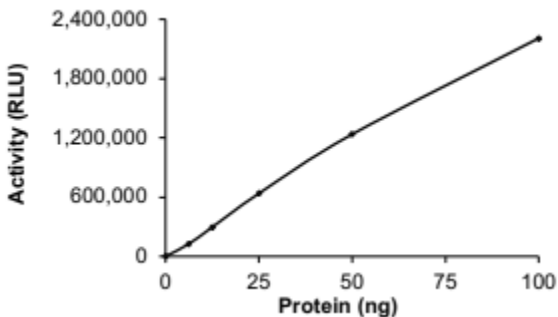
Specific Activity: 3660 pmol/min/ μg

Assay Conditions: 10 μl of diluted PIP5K1A was mixed with 5 μl of PI(4)P:PS substrate solution (sonicated for 2 minutes prior to use) and 5 μl of kinase dilution buffer IX with final 0.02% Triton X-100. Reaction was initiated by adding 5 μl of 250 μM ATP assay solution, shaking plate for 2 minutes and incubating for 40 min at 30°C . Added 25 μl of ADP-Glo (Promega), shake plate and incubate at room temp. for 40 min Then added 50 μl Kinase Detection Reagent (Promega), incubate 30 min. at room temp. and read plate.

Application: Useful for studying enzyme kinetics and screening small molecule inhibitors.

Quality Assurance

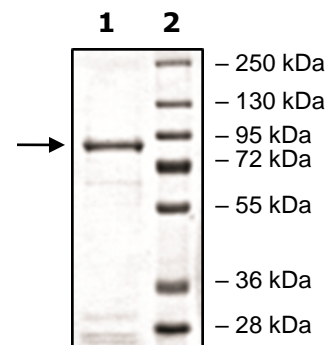
Specific Activity



**4-20% SDS-PAGE
Coomassie staining**

Lane 1:
PIP5K1A
Lane 2:
Protein Marker

MW: 86 kDa
Purity: $\geq 90\%$



OUR PRODUCTS ARE FOR RESEARCH USE ONLY. NOT FOR DIAGNOSTIC OR THERAPEUTIC USE.

To place your order, please contact us by Phone **1.858.202.1401** Fax **1.858.481.8694**

Or you can Email us at: info@bpsbioscience.com

Please visit our website at: www.bpsbioscience.com