

Data Sheet

Tie2

Human, recombinant, N-terminal His tag
 Catalog #: 40270
 Lot#: 130205-3C Conc.: 0.08 mg/ml

Formulated in: 40 mM Tris-HCl, pH 8, 110 mM NaCl, 2.2 mM KCl, 165 mM imidazole, 3 mM DTT, and 20% glycerol.

Stability: >6 months at -80°C

References:

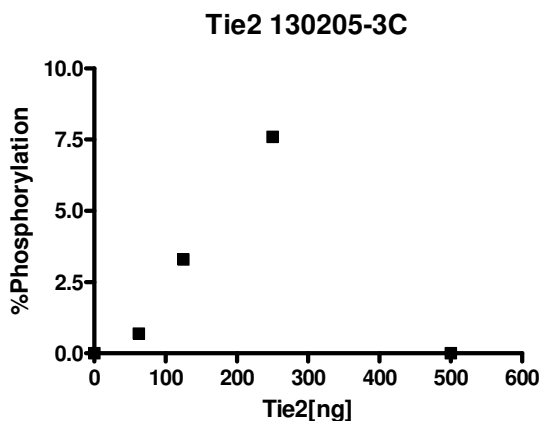
1. Murray, B.W., *et al.*, *Biochemistry*. 2001 Aug 28;**40(34)**:10243-53.
2. Yuan, H.T., *et al.*, *Mol Cell Biol*. 2009 Apr;**29(8)**:2011-22.

Description: Human TEK tyrosine kinase, endothelial, also known as Tie2, (GenBank Accession No. NM_000459) a.a. 771-1124(end) with N-terminal His tag, MW=41 kDa, expressed in baculovirus infected Sf9 cell expression system.

Specific Activity: 0.4 pmol/min/μg. Assay condition: Enzyme reaction is conducted in a buffer containing 50 mM HEPES (pH 7.5), 10 mM MgCl₂, 1 mM EGTA, 200 μM ATP, 0.01% Brij-35, 2 μM substrate (Tyr Peptide 5, Z-lyte kinase assay kit from Invitrogen), and enzyme at 37°C for 1 hr.

Application: Useful for the study of enzyme kinetics, screening inhibitors, and selectivity profiling.

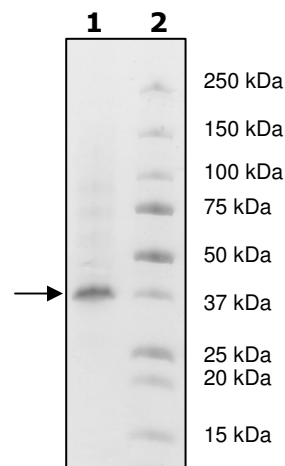
Quality Assurance



4-20 % SDS-PAGE Coomassie staining

Lane 1:
1.6 μg Tie2
Lane 2:
Protein Marker

MW: 41 kDa.
Purity: ≥74%



OUR PRODUCTS ARE FOR RESEARCH USE ONLY. NOT FOR DIAGNOSTIC OR THERAPEUTIC USE.

To place your order, please contact us by Phone **1.858.829.3082** Fax **1.858.481.8694**
 Or you can Email us at: info@bpsbioscience.com
 Please visit our website at: www.bpsbioscience.com