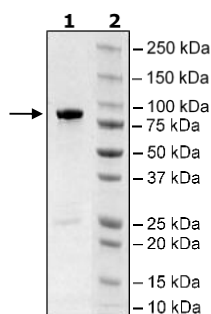


## Product Information

|                           |  |
|---------------------------|--|
| <b>Construct:</b>         | ROS1 (GST-His-Th-1883-2347(end))   |
| <b>Concentration:</b>     | 2.40 mg/ml   |
| <b>Species:</b>           | Human  |
| <b>Formulated In:</b>     | 40 mM Tris-HCl, pH 8.0, 110 mM NaCl, 2.2 mM KCl, 0.04% Tween-20, 20% glycerol, 3 mM DTT, 2 mM glutathione  |
| <b>Expression System:</b> | Sf9  |
| <b>Format:</b>            | Aqueous buffer solution  |
| <b>Stability:</b>         | At least 6 months at -80°C. Avoid freeze/thaw cycles.  |
| <b>Storage:</b>           | -80°C  |
| <b>Genbank Accession:</b> | NM_002944  |
| <b>MW:</b>                | 82 kDa   |
| <b>Purity:</b>            | ≥90%   |
| <b>Specific Activity:</b> | 60 pmol/min/μg   |
| <b>Assay Conditions:</b>  | Assay was done according to the HPK1 Assay Kit (BPS Bioscience # 79775) with ROS-1 titrated from 800 ng/rxn – 12.5 ng/rxn, 20 μM ATP was used instead of 10 μM, and IGFR-1tide at 0.1 mg/ml used instead of MBP. |
| <b>Applications:</b>      | Useful for the study of enzyme kinetics, screening inhibitors, and selectivity profiling.  |

## Quality Control Data

### 4-20% SDS-Page Coomassie Staining



### Specific Activity

