

Data Sheet

RET

Human, recombinant, N-terminal GST-tag
Catalog #: 40267
Lot#: 1001 **Conc.:** 0.75 mg/ml

Formulated in: 25 mM Tris-HCl, pH 8.0,
 100 mM NaCl, 0.05% Tween-20, 50%
 glycerol, 10 mM reduced glutathione, and 3
 mM DTT.

Stability: >6 months at -80°C

References:

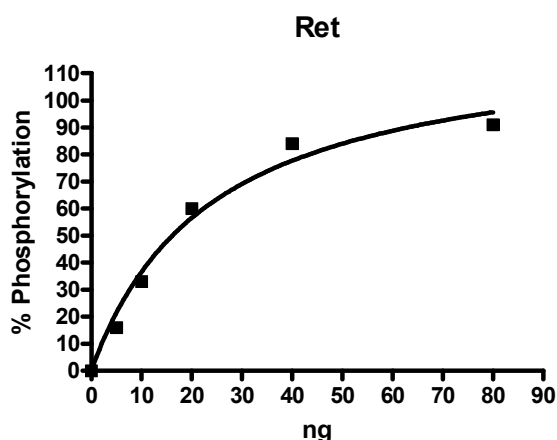
1. Moore, S.W., Appfelstaedt, J. and Zaahl, M.G. J. Pediatr. Surg. **42** (2), 326-332 (2007)
2. Griseri, P., Lantieri, F., Puppo, F., Bachetti, T., Di Duca, M., Ravazzolo, R. and Ceccherini, I. Hum. Mutat. **28** (2), 168-176 (2007)

Description: Human Ret (GenBank Accession No. NM_020975), (a.a. 658-end) with N-terminal GST tag, MW= 77.5 kDa, expressed in an Baculovirus infected Sf9 cell expression system.

Specific Activity: 52 pmole/min/µg. One unit is defined as the amount of enzyme that will transfer 1 pmol phosphate to Tyr substrate per minute at pH 7.4 and 30°C. Assay buffer: 50 mM HEPES, pH 7.4, 3 mM MgCl₂, 3 mM MnCl₂, 1 mM DTT, 3 µM Na-orthovanadate, 0.1 mM ATP, 30 µg/ml Poly (Glu:Tyr)_{4:1} substrate, and 2 µg/ml recombinant RET.

Application: Useful for the study of enzyme kinetics, screening inhibitors, and selectivity profiling.

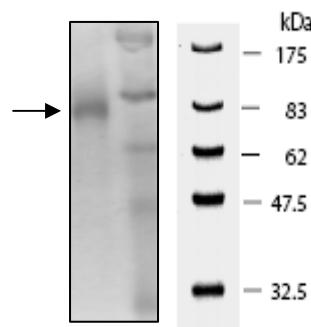
Quality Assurance



10% SDS-PAGE Coomassie staining

Lane 1:
RET
Lane 2:
Protein Marker
BioLabs (#P7708L)

MW: 77.5kDa
Purity: ≥90%



OUR PRODUCTS ARE FOR RESEARCH USE ONLY. NOT FOR DIAGNOSTIC OR THERAPEUTIC USE.

To place your order, please contact us by Phone **1.858.829.3082** Fax **1.858.481.8694**
 Or you can Email us at: info@bpsbioscience.com
 Please visit our website at: www.bpsbioscience.com