

Data Sheet

cMet, GST-Tag

Human, recombinant, N-terminal GST tag

Cat #: 40255

Lot#: 120419 **Conc.:** 0.75 mg/ml

Formulated in: 45 mM Tris-HCl, pH 8.0, 124 mM NaCl, 2.4 mM KCl, 10% glycerol and 3mM DTT.

Stability: At least 6 months at -80°C

References:

1. Emaduddin M. et al., Proc. Natl. Acad. Sci. U.S.A. **105 (7):**2358-2362 (2008).
2. Drebber U. et al., Oncol Rep. **19(6):**1477-83 (2008).

Description: Human cMet also known as, c-MET, Met Proto-Oncogene, HGFR, SFR, and Hepatocyte Growth Factor Receptor, GenBank Accession No. X54559, a.a. 956-1390 with N-terminal GST tag, expressed in a Baculovirus infected Sf9 cell expression system. MW= 74 kDa.

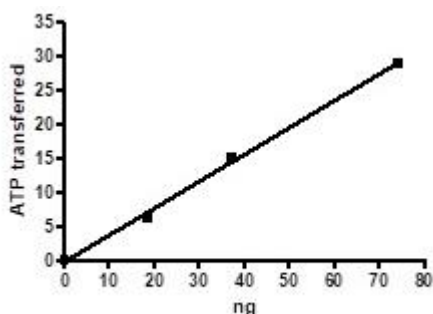
Specific Activity: 64pmol/min/ug.

Assay conditions: 40 mM Tris-HCl pH 7.4, 20 mM MgCl₂, 0.1 mg/mL BSA and 0.2 mM DTT using 0.1 mg/ml IGF-1R tide substrate and 20 mM ATP. Reaction was done at 30oC for 40 min. Amount of ATP transferred was measured using Kinase-Glo reagent from Promega.

Application: Useful for the study of enzyme kinetics, screening inhibitors, and selectivity profiling.

Quality Assurance

Specific Activity:

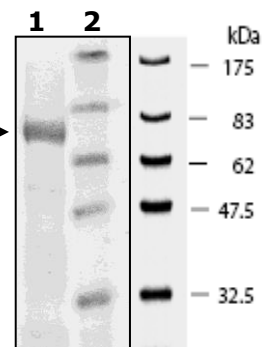


10% SDS-PAGE
Coomassie staining

Lane 1:
4 µg cMet →

Lane 2:
Protein Marker
BioLabs (#P7708L)

MW: 74 kDa
Purity: ≥44%



OUR PRODUCTS ARE FOR RESEARCH USE ONLY. NOT FOR DIAGNOSTIC OR THERAPEUTIC USE.

To place your order, please contact us by Phone **1.858.202.1401** Fax **1.858.481.8694**

Or you can Email us at: info@bpsbioscience.com

Please visit our website at: www.bpsbioscience.com