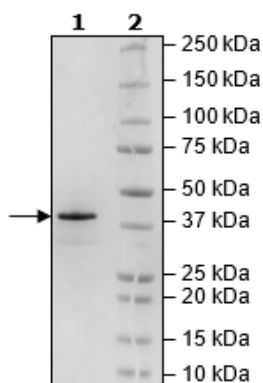


## Product Information

<b>Construct:</b>	MAPK14 (His-2-360(end))
<b>Concentration:</b>	0.10 mg/ml
<b>Species:</b>	Human
<b>Formulated In:</b>	40 mM Tris-HCl, pH 8.0, 110 mM NaCl, 2.2 mM KCl, 0.04% Tween-20, 20% glycerol, and 3 mM DTT
<b>Expression System:</b>	Sf9
<b>Format:</b>	Aqueous buffer solution
<b>Stability:</b>	At least 6 months at -80°C. Avoid freeze/thaw cycles.
<b>Storage:</b>	-80°C
<b>Genbank Accession:</b>	NM_001315
<b>MW:</b>	42 kDa
<b>Purity:</b>	80%
<b>Specific Activity:</b>	$\geq 117$ pmol/min/ $\mu$ g
<b>Assay Conditions:</b>	Assay was done in Kinase Buffer 1 (BPS Bioscience #79334), 40 $\mu$ M ATP, and 0.1 mg/ml P38 peptide substrate (InnoPep). Reaction was incubated at 30°C for 40 min. Amount of ATP transferred was calculated using Kinase Glo reagent (Promega).
<b>Applications:</b>	Useful for the study of enzyme kinetics, screening inhibitors, and selectivity profiling.

## Quality Control Data

4-20% SDS-PAGE Coomassie Staining



MAPK14 Activity

