

## Data Sheet

### INSR, GST-Tag

Human, Recombinant, N-terminal GST-tag  
**Catalog #:** 40241  
**Lot #:** 140905-A      **Conc.:** 1.18 mg/ml

**Formulated in:** 40 mM Tris-HCl pH 8.0,  
 110 mM NaCl, 2.2 mM KCl, 0.04% Tween  
 20, 16 mM Glutathione, 3 mM DTT and  
 20% glycerol

**Stability:** At least 6 months at -80°C

**References:**

1. Zhou, P. et al. J. Pediatr. Endocrinol. Metab. 21 (4), 369-375 (2008).
2. Machorro-Lazo, M.V. et al., Gynecol. Obstet. Invest. 67 (1), 14-19 (2008).

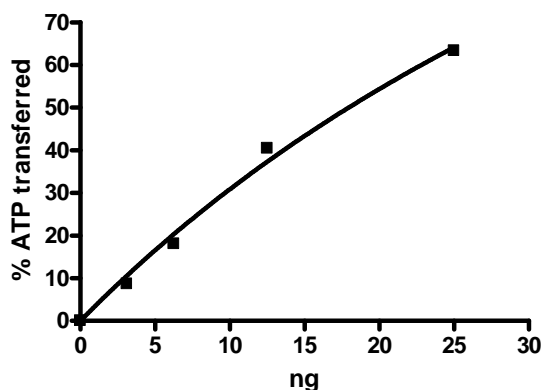
**Description:** Human insulin receptor (INSR), GenBank Accession No. NM\_001079817, a.a. 999-end with an N-terminal GST-tag, expressed in a baculovirus expression system. MW=67 kDa

**Specific Activity:** 752 pmol/min/μg.  
**Assay Conditions:** 40 mM Tris-HCL pH 7.4, 20 mM MgCl<sub>2</sub>, 0.1 mg/mL BSA and 0.2 mM DTT using 0.1 mg/ml Alextide substrate and 20 mM ATP. Reaction was done at 30°C for 40 min. Amount of ATP transferred was calculated using Kinase-Glo reagent from Promega.

**Application:**  
 Enzyme kinetics, autophosphorylation, and phosphorylation of target substrates.

## Quality Assurance

### Specific Activity



### 4-20% SDS-PAGE Coomassie staining

**Lane 1:**  
2 μg INSR  
**Lane 2:**  
Protein Marker

**MW:** 70 kDa  
**Purity:** ≥57%

