

## Data Sheet

### HER4, GST-Tag

Human, recombinant, N-terminal GST-tag  
**Catalog #:** 40232  
**Lot#:** 140513                      **Conc.:** 0.69 mg/ml

**Formulated in:** 25 mM Tris-HCl, pH 8.0,  
 100 mM NaCl, 0.05% Tween-20, 50%  
 glycerol.

**Stability:** At least 6 months at -80°C.  
 Avoid freeze/thaw cycles.

**References:**

1. Strunk, K.E. et al., Cancer Res. 67 (14), 6582-6590(2007).
2. Law, A.J. et al., Hum. Mol. Genet. 16 (2), 129-141 (2007).

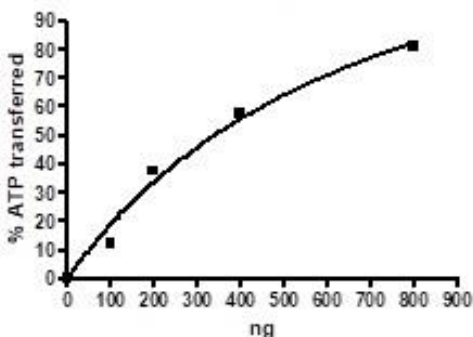
**Description:** Human HER4 kinase, also known as Erb-B4, Proto-Oncogene-Like Protein C-ErbB-4, and Tyrosine Kinase-Type Cell Surface Receptor HER4, GenBank Accession No. NM\_005235, a.a. 708-993, with an N-terminal GST-tag, expressed in a Baculovirus infected Sf9 cell expression system. MW=59.5 kDa.

**Specific Activity:** 48 pmol/min/μg.  
 Assay Conditions: 40 mM Tris-HCl pH 7.4, 20 mM MgCl<sub>2</sub>, 0.1 mg/mL BSA and 0.2 mM DTT using 0.2 mg/ml Poly-(Glu4:Tyr)-biotin substrate and 20 mM ATP. Reaction was done at 30°C for 40 min. Amount of ATP transferred was calculated using Kinase-Glo reagent from Promega.

**Application:** Useful for the study of enzyme kinetics, screening inhibitors, and selectivity profiling.

## Quality Assurance

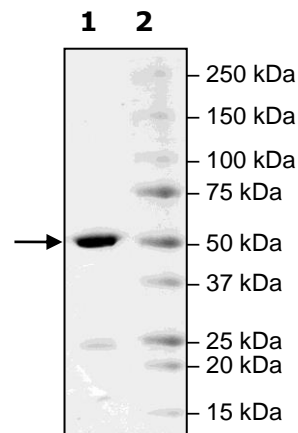
**Specific Activity:**



**4-20% SDS-PAGE**  
**Coomassie staining**

**Lane 1:**  
 2 μg Her4  
**Lane 2:**  
 Protein Marker

**MW:** 59.5 kDa  
**Purity:** ≥90%



OUR PRODUCTS ARE FOR RESEARCH USE ONLY. NOT FOR DIAGNOSTIC OR THERAPEUTIC USE.

To place your order, please contact us by Phone **1.858.202.1401** Fax **1.858.481.8694**  
 Or you can Email us at: [info@bpsbioscience.com](mailto:info@bpsbioscience.com)  
 Please visit our website at: [www.bpsbioscience.com](http://www.bpsbioscience.com)