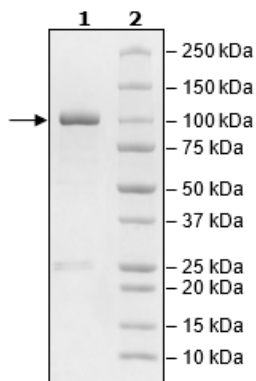


Product Information

Construct:	HER2 (GST-679-1255(end))
Concentration:	0.86 mg/ml
Species:	Human
Formulated In:	40 mM Tris-HCl, pH 8.0, 110 mM NaCl, 2.2 mM KCl, 20% glycerol, 3 mM DTT, and 2 mM glutathione
Expression System:	Sf9
Format:	Aqueous buffer solution
Stability:	At least 6 months at -80°C. Avoid freeze/thaw cycles.
Storage:	-80°C
Genbank Accession:	NM_004448
MW:	89 kDa
Purity:	80%
Specific Activity:	≥40 pmol/min/μg
Assay Conditions:	Assay was done according to HER2 Kinase Assay Kit (BPS Bioscience #40721) with various amounts of HER2.
Applications:	Useful for the study of enzyme kinetics, screening inhibitors, and selectivity profiling.

Quality Control Data

4-20% SDS-PAGE Coomassie Staining



HER2 Activity

