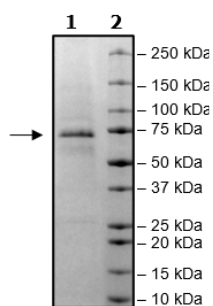


Product Information

Construct:	FLT1 (His-783-1338(end))
Concentration:	1.28 mg/ml
Species:	Human
Formulated In:	40 mM Tris-HCl pH 8.0, 110 mM NaCl, 2.2 mM KCl, 0.04% Tween-20, 20% glycerol, 3 mM DTT, 15 mM imidazole
Expression System:	Sf9
Format:	Aqueous buffer solution
Stability:	At least 6 months at -80°C. Avoid freeze/thaw cycles.
Storage:	-80°C
Genbank Accession:	NM_002019
MW:	68 kDa
Purity:	75%
Assay Conditions:	Assay was done according to the FLT1 Kinase Assay Kit (BPS Bioscience #78019) with FLT1 titrated from 400 ng/rxn – 0.625 ng/rxn with 20 μM ATP instead of 10 μM ATP.
Applications:	Useful for the study of enzyme kinetics, screening inhibitors, and selectivity profiling.

Quality Control Data

4-20% SDS-Page Coomassie Staining



FLT1 Activity

