

Data Sheet

PHKG1

Human, recombinant, N-terminal GST tag

Catalog #: 40150

Lot #: 111031 **Conc.:** 0.1 mg/ml

Formulated in: 50 mM Tris-HCl, pH 7.5, 150 mM NaCl, 10mM glutathione, 0.1 mM EDTA, 0.25 mM DTT, 0.1 mM PMSF, and 25% glycerol.

Stability: >12 months at -80°C

References:

1. Burwinkel, B., et al. *Eur. J. Human Genet.* **11:** 516-526 (2003).
2. Wehner, M., et al. *Human Genet* **96(5):** 616-618 (1995).

Description: Human PHKG1 (phosphorylase kinase gamma 1), GenBank Accession No. NM_006213, full length, with N-terminal GST tag, MW ~70 kDa, expressed in Sf9 insect cells via a baculovirus expression system.

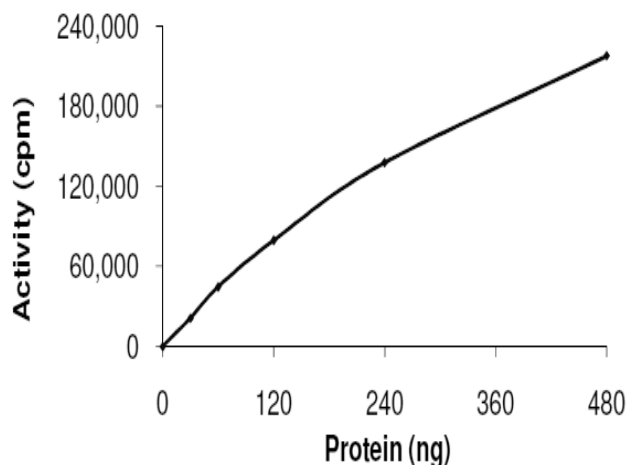
Specific Activity: 29 pmol/min/μg

Assay Buffer: 5 mM MOPS, 2.5 mM β-glycerophosphate, 5 mM MgCl₂, 1 mM EGTA, 0.4 mM EDTA, 0.05 mM DTT, 2 mM ATP. Incubate PHKG1 with 0.25 mg/ml ZIKtide peptide substrate and [³³P]-ATP at 30°C for 15 minutes, then spot reaction on phosphocellulose paper, fix in 1% phosphoric acid, and assay with a scintillation counter.

Application: Useful for the study of enzyme kinetics, screening inhibitors, and selectivity profiling.

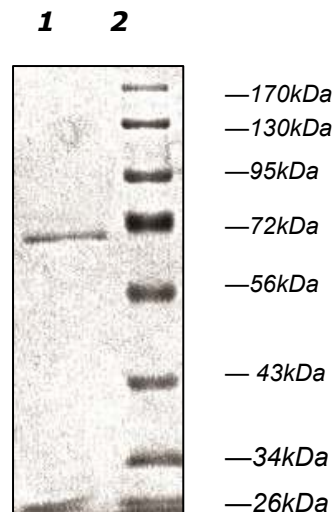
Quality Assurance

10% SDS-PAGE
Coomassie staining



Lane 1:
PHKG1
Lane 2:
Protein Marker

MW: 70 kDa
Purity: ≥75%



OUR PRODUCTS ARE FOR RESEARCH USE ONLY. NOT FOR DIAGNOSTIC OR THERAPEUTIC USE.

To place your order, please contact us by Phone 1.858.829.3082 Fax 1.858.481.8694

Or you can Email us at: info@bpsbioscience.com

Please visit our website at: www.bpsbioscience.com