

Data Sheet

p38 α , GST-tag

Human, Recombinant, N-terminal GST-tag

Catalog #: 40070

Lot #: 190128-G2 **Conc.:** 0.77 mg/ml

Formulated in: 40 mM Tris-HCl, pH 8.0, 110 mM NaCl, 2.2 mM KCl, 0.04% Tween-20, 2 mM DTT and 20% Glycerol.

Stability: At least 6 months at -80°C .
 Avoid freeze/thaw cycles.

References:

1. Johnson, G. *et al.*, *Science*. **298(5600)**: 1911-1912, 2002.
2. Raingeud, J. *et al.*, *JBC*. **270(13)**: 7420-7426, 1995.

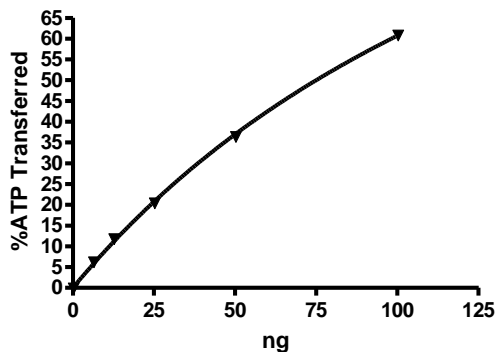
Description: Human p38 α , also known as MARK14, p38 MAP Kinase, and Mitogen-Activated Protein Kinase 14, a.a. 1-360 (end), Genbank Accession No. NM_139012 with an N-terminal GST-tag, expressed in a Baculovirus infected Sf9 cell expression system. MW = 68 kDa.

Specific Activity: ≥ 100 pmol/min/ μg
 Assay conditions: Assay was performed in kinase buffer containing 0.2 mM DTT using P38 peptide substrate (0.1 mg/ml) and 20 μM ATP. Reaction was done at 30 $^{\circ}\text{C}$ for 40 min. Amount of ATP transferred was calculated using Kinase-Glo reagent (Promega).

Application: Useful for the study of enzyme kinetics, screening inhibitors, and selectivity profiling.

Quality Assurance

Specific Activity

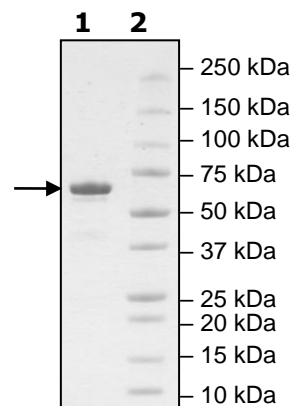


4-20% SDS-PAGE Coomassie staining

Lane 1:
2 μg MAPK14

Lane 2:
Protein Marker

MW: 68 kDa
Purity: $\geq 90\%$



OUR PRODUCTS ARE FOR RESEARCH USE ONLY. NOT FOR DIAGNOSTIC OR THERAPEUTIC USE.

To place your order, please contact us by Phone **1.858.202.1401** Fax **1.858.481.8694**

Or you can Email us at: info@bpsbioscience.com

Please visit our website at: www.bpsbioscience.com