

Data Sheet

BRAF, GST-tag

Human, Recombinant, N-terminal GST-tag
Catalog #: 40065
Lot #: 190418-G1 **Conc.:** 0.47 mg/ml

Formulated in: 40 mM Tris-HCl, pH 8.0,
 110 mM NaCl, 2.2 mM KCl, 0.04%
 Tween-20, 3 mM DTT and 20% Glycerol.

Stability: At least 6 months at -80°C .
 Avoid freeze/thaw cycles.

References:

1. Sithanandam G., *et al.* (1990). *Oncogene*. **5(12)**: 1775–1780.
2. Shepherd C., *et al.* (2010). *Curr. Oncol. Rep.* **12(3)**:146-152.

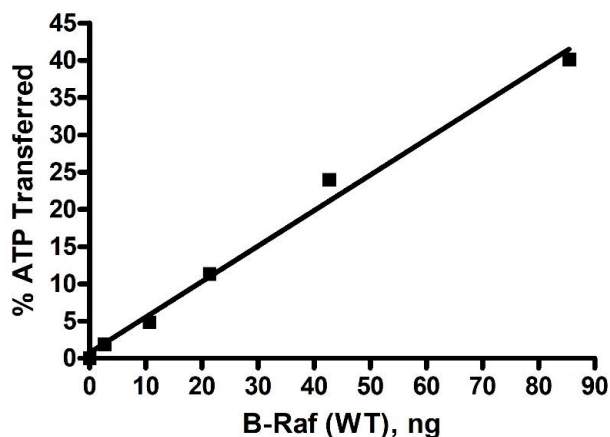
Description: Human BRAF, also known as B-Raf Proto-Oncogene and RAFB1, GenBank Accession No. NM_004333, a.a. 417-766(end) with N-terminal GST-tag, expressed in Sf9 cells using a Baculovirus expression system. MW=65 kDa.

Specific Activity: ≥ 112 pmole/min/ μg .
Assay Conditions: Assay was done in Kinase buffer containing 1 mM DTT, 0.1 mg/ml Raf substrate (Mek1 cat #40075 lot 190508-3), and 10 μM ATP. Reaction was done at 30°C for 45 min. Amount of ATP transferred was calculated using Kinase-Glo reagent (Promega).

Application:
 Useful for the study of enzyme kinetics, screening inhibitors, and selectivity profiling.

Quality Assurance

Specific Activity

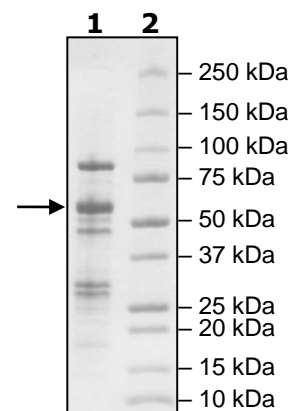


4-20% SDS-PAGE Coomassie staining

Lane 1:
2 μg BRAF
Lane 2:
Protein Marker

MW: 65 kDa

Purity: $\geq 35\%$



OUR PRODUCTS ARE FOR RESEARCH USE ONLY. NOT FOR DIAGNOSTIC OR THERAPEUTIC USE.

To place your order, please contact us by Phone **1.858.202.1401** Fax **1.858.481.8694**
 Or you can Email us at: info@bpsbioscience.com
 Please visit our website at: www.bpsbioscience.com